

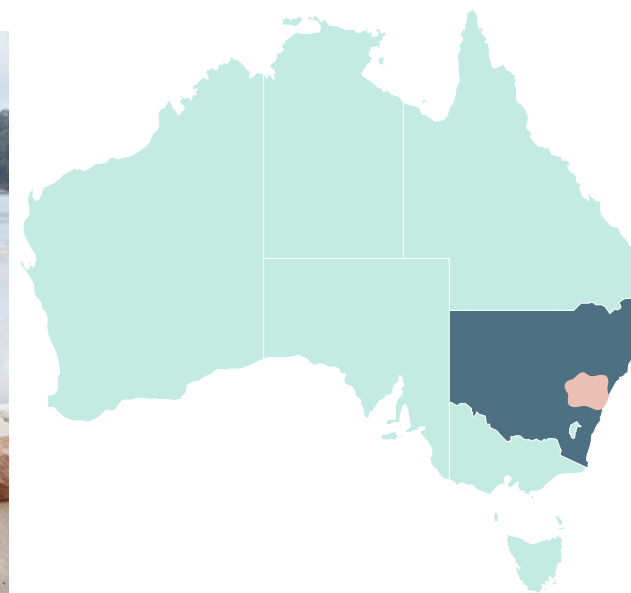


# hunter

NEW SOUTH WALES - AUSTRALIA

REGION

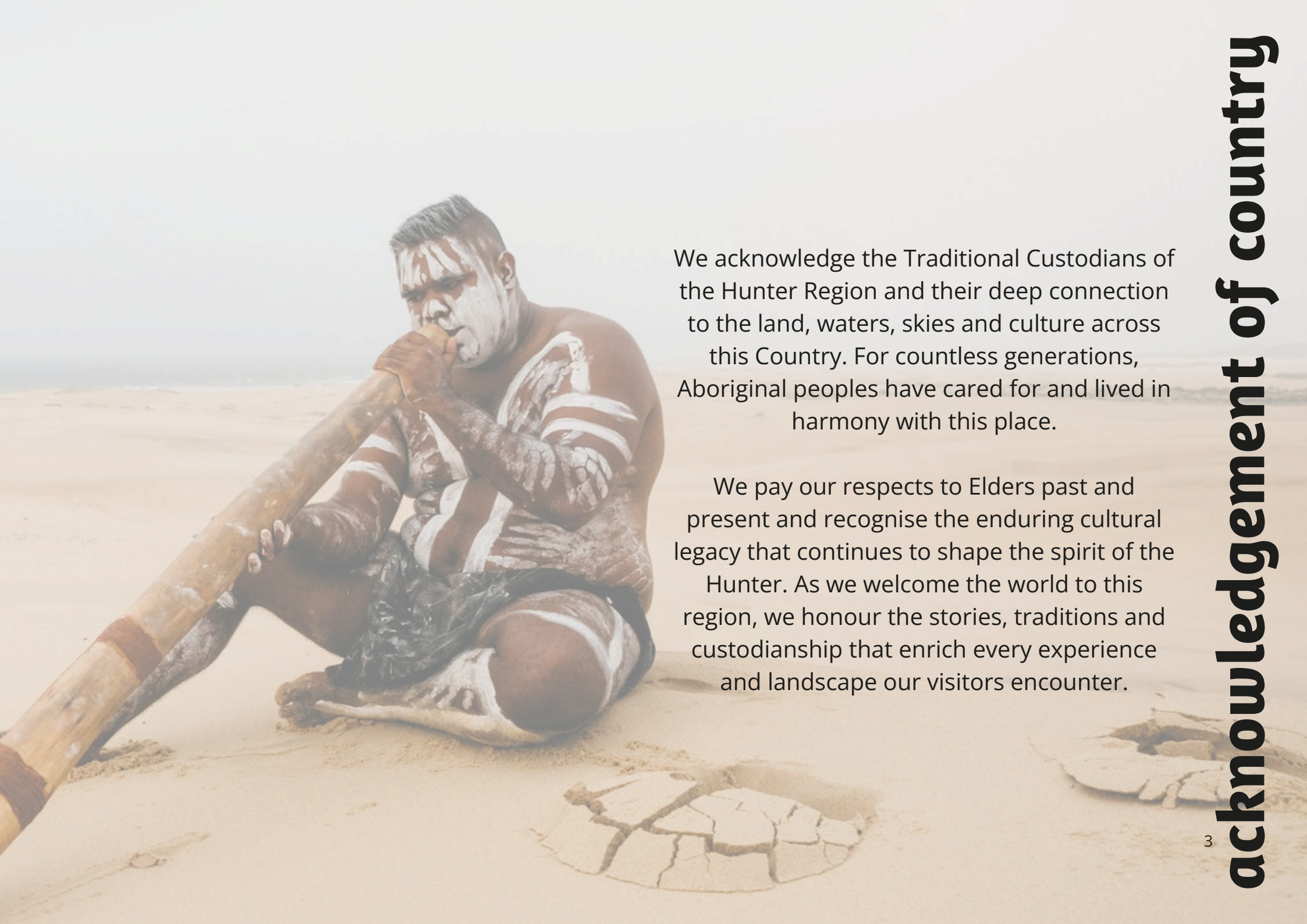
## TRADE BROCHURE



April 2026

# contents

Acknowledgement of Country.....	3
Foreword from the Chair.....	4
Map of Australia showing New South Wales.....	5
Map of NSW showing Hunter Region.....	6
Hunter Valley Overview.....	8
Hunter Valley Key Experiences.....	9
Hunter Valley Products.....	10
Port Stephens Overview.....	22
Port Stephens Key Experiences.....	23
Port Stephens Products.....	24
Central Coast Overview.....	34
Central Coast Key Experiences.....	35
Central Coast Products.....	36
Newcastle Overview.....	46
Newcastle Key Experiences.....	47
Newcastle Products.....	48
Maitland Overview.....	56
Maitland Key Experiences.....	57
Maitland Products.....	58
Lake Macquarie Overview.....	64
Lake Macquarie Key Experiences.....	65
Lake Macquarie Products.....	66
Upper Hunter Overview.....	70
Upper Hunter Key Experiences.....	71
Dungog Overview.....	72
Dungog Key Experiences.....	73



We acknowledge the Traditional Custodians of the Hunter Region and their deep connection to the land, waters, skies and culture across this Country. For countless generations, Aboriginal peoples have cared for and lived in harmony with this place.

We pay our respects to Elders past and present and recognise the enduring cultural legacy that continues to shape the spirit of the Hunter. As we welcome the world to this region, we honour the stories, traditions and custodianship that enrich every experience and landscape our visitors encounter.

**acknowledgement of country**

## Foreword from the Chair, Destination Sydney Surrounds North

Australia's Hunter Region is a diverse and captivating destination that showcases the very best of New South Wales. Rich in character and contrast, the region invites visitors to explore a collection of unique places — from the rolling vineyards and world-class wineries of the Hunter Valley to the sweeping sand dunes and pristine beaches of Port Stephens.

This trade brochure has been developed to introduce our wholesale and inbound trade partners to the full spectrum of export-ready tourism experiences across the Hunter. As a region, we're proud to present a wide range of commissionable product — accommodation, tours, attractions, and experiences — all backed by a strong commitment to quality, sustainability, and accessibility.

Conveniently located just over two hours north of Sydney and serviced by Newcastle Airport, the Hunter Region is perfectly placed for short escapes or extended itineraries. It's a region where nature, culture, and adventure combine — where visitors can connect with local stories, encounter wildlife in the wild, enjoy authentic food and wine experiences, and discover landscapes that stretch from coast to countryside.

From the eco certified Central Coast to the vibrant coastal city of Newcastle and the tranquil shores of Lake Macquarie. As well as the historic streets of Maitland, the equine heartland of the Upper Hunter and the rugged beauty of Dungog — this is a destination where every corner has something remarkable to offer.

We are excited to welcome you to the Hunter and invite you to discover the experiences that will inspire your clients and elevate your itineraries. Together, let's showcase a truly unforgettable slice of real Australia.



Christina Tulloch  
Chair, Destination Sydney Surrounds North







- DRIVE TIMES FROM SYDNEY**
- Central Coast - 45 mins
  - Lake Macquarie - 1.5 hrs
  - Newcastle - 2 hrs
  - Port Stephens - 2.5 hrs
  - Maitland - 2.5 hrs
  - Hunter Valley - 2 hrs
  - Upper Hunter - 3 hrs
  - Dungog - 2.5 hrs





The Hunter Valley, the birthplace of Australian wine, offers an elegant blend of heritage, luxury, and natural beauty.

Set at the foothills of culturally significant mountain ranges, the region is defined by rolling vineyards, native wildlife, and landscapes that inspire calm and connection.

With our great reputation for wine and cuisine, the valley invites guests to explore diverse local produce and indulge in artisanal flavours crafted with care.

Beyond exceptional wine, the region is eminently suited to families offering recreation, wellness and rejuvenation through spa retreats, golf, scenic walks, and tranquil hideaways.

It is a destination for romance, where golden sunsets, peaceful vistas, and bespoke experiences create unforgettable memories.

Just a short journey from Newcastle and Sydney, the Hunter Valley delivers a refined escape shaped by authenticity, flavour, and enduring Australian charm. Every visit reveals something new and special



Distance from Newcastle: 65kms, 1 hour drive  
Distance from Sydney: 175kms, 2 hours drive

# key experiences



## Food & Beverage

- Celebrated wineries and cellar doors
- Botanical distilleries and premium breweries
- Curated chocolate, patisserie, cheese and high-end cooking experiences
- Hatted vineyard dining
- Bespoke vineyard picnics and weekend markets



## Extensive Accommodation

- Boutique retreats and vineyard-view suites
- Tailored, catered experiences and restorative spa rituals
- Family stays with pools, golf and nature trails
- Private tours for seamless personalised discovery



## Nature & Art

- Wildlife sanctuaries and stargazing
- Sculptural gardens and heritage trail
- Bike trails and soft-adventure exploration
- Hot air ballooning at sunrise



HUNTER VALLEY RESORT + FARM



TULLOCH

hunter valley



917 Hermitage Road Pokolbin NSW 2320

**OVERVIEW**

Discover Hunter Valley Resort + Farm, a 100-acre family-owned property with vineyard, cellar door, 4 Pines taproom, farm animals, adventure activities, wine and cooking schools, and choice of 4 star guestrooms in the heart of Hunter Valley Wine Country

**ENTRY, PASS OR TOUR INCLUSIONS**

Choose from wine and beer tastings, vineyard and farm tours, horse rides, Segway, grape stomping, cooking and candy classes, or a full-day Wine Theatre and Wine School experience, all bookable onsite or via inbound partners

**IMPORTANT INFORMATION**

Open daily year-round. Tours and activities operate in all-weather with minor adjustments as required. Bookings essential for group and trade rates. Family friendly. Parking and accessible facilities onsite

**PRODUCT INFORMATION**

- Wine, beer, farm and food
- Soft adventure experiences
- 100-acre family estate

**WHAT TO BRING**

Comfortable clothing and enclosed shoes for outdoor activities. Hat, sunscreen, and camera recommended. Bring a sense of fun and curiosity for a true Hunter Valley farm and wine country experience

**GROUP CAPACITY**

Up to 300 people for groups, conferences, or incentive programs

**CONTACT**

Telephone: +61 2 4998 7777  
 Email: [stay@hunterresort.com.au](mailto:stay@hunterresort.com.au)  
 Website: [hunternvalley.com.au](http://hunternvalley.com.au)

638 De Beyers Road Pokolbin NSW 2320 (cnr McDonalds and De Beyers Roads)

**OVERVIEW**

From unlikely beginnings over 130 years ago, the Tulloch story is one of the most authentic & generational wine dynasties of modern times. Located an easy 2 hour drive from Sydney and 45 minutes from Newcastle in Australia's oldest wine region, the Hunter Valley. Tulloch offer a range of unique and exciting wine tasting experiences suitable for groups from 2-50 pax in our award winning Cellar Door. Tulloch Wines is also proudly inclusive and family friendly offering a unique Kids Junior Tasting Experience and Teens Kombucha Tasting Experience (also suitable for non-drinkers) ensuring all members of your groups are welcomed and entertained

**ENTRY, PASS OR TOUR INCLUSIONS**

- Hosted private wine tasting experiences
- 3-6 wines to taste per experience
- Take home Wine Experience Guide
- Fun & informative tasting experience mats
- Local Cheese & Charcuterie or Gourmet Vegetarian Boards
- Unique inclusive Kids & Teens tasting experiences
- Wine tastings available from \$12/Adult

**IMPORTANT INFORMATION**

- Open 7 days 10am-5pm, last booking at 4pm
- Book in advance to avoid disappointment
- Kids & Teens tastings to be accompanied by adult
- Closed Christmas Day and Good Friday
- Mobility parking spaces and level entry
- Dogs welcome on the balcony and/or inside if on the leash and friendly!

**GROUP CAPACITY**

- Online bookings from 1-10 pax
- Larger groups of 11-50 pax can be booked by email or phone

**CONTACT**

Telephone: 61 2 4998 7580  
 Email: [cellardoor@tullochwines.com](mailto:cellardoor@tullochwines.com)  
 Website: [tullochwines.com](http://tullochwines.com)



McCAFFREY'S ESTATE



614 Hermitage Road Pokolbin NSW 2320

**OVERVIEW**

Nestled in the heart of the Hunter Valley, McCaffrey's Estate is a family-owned boutique winery known for its warm hospitality, premium wines and relaxed country charm. Guests are invited to slow down, take in sweeping vineyard views and enjoy the authentic flavours of the region. A highlight is the Winemaker for the Day experience, where participants are guided by a knowledgeable wine educator through a hands-on blending session. Guests experiment with different varietals, bottle their own custom red wine and take home a truly unique Hunter Valley souvenir

**ENTRY, PASS OR TOUR INCLUSIONS**

- 90-minute educational red wine blending experience led by a wine educator
- 750ml bottle and wine label to complete the blend and take home as a souvenir
- Water and wine blending worksheet

**IMPORTANT INFORMATION**

- A Winemaker for the Day classes run daily (bookings essential)
- 90 minute classes commencing at 10:30am
- Participants must be over 18 years
- Parking is available onsite
- Closed on public holidays

**GROUP CAPACITY**

A Winemaker for the Day accommodates for minimum 2 people, up to 30 people

**PRODUCT INFORMATION**

- Guided wine blending session with a knowledgeable wine educator
- Tasting of individual varietals grown on the estate
- Creation and bottling of your own personalised red wine blend
- Take home 750ml bottle of red wine
- Perfect for wine lovers, couples, small groups, and visitors seeking a unique hands-on Hunter Valley experience

**CONTACT**

Telephone: 61 487 809 888

Email: [info@mccaffreystate.com.au](mailto:info@mccaffreystate.com.au)

Website: [mccaffreystate.com.au](http://mccaffreystate.com.au)

WINMARK  
WINES



189 - 229 Wollombi Rd, Broke NSW 2330

**OVERVIEW**

Discover the perfect blend of art, nature and wine at Winmark Wines. Enjoy a self-guided Sculpture Walk through the property, curated by owner Karin Adcock, then settle in for a Chardonnay tasting paired with a charcuterie and cheese platter. It's a relaxed and memorable experience celebrating creativity, flavour and indulgence

**ENTRY, PASS OR TOUR INCLUSIONS**

- 1-hour self-guided walking tour amongst 50+ sculptures
- Charcuterie & cheese platter including a glass of Winmark Chardonnay served in the Cellar Door
- Wine tasting of 5 different award-winning Chardonnays
- Access to curated art gallery & inspiring Gift Boutique
- Booking is essential prior to arrival

**IMPORTANT INFORMATION**

- Tours run daily between 9am and 4pm all year
- Meeting Point - guests are to meet at the Cellar Door
- Parking available onsite
- Bookings are essential

**WHAT TO BRING**

- Comfortable walking shoes, hat, weather appropriate clothing and sunscreen
- Winmark offers many spectacular photo opportunities so make sure to bring your camera

**GROUP CAPACITY**

Group capacity - minimum of 2 people and maximum 40 people

**CONTACT**

Telephone: 61 429 265 268

Email: [info@winmarkwines.com.au](mailto:info@winmarkwines.com.au)

Website: [winmarkwines.com.au](http://winmarkwines.com.au)

hunter valley



**750 De Beyers Road Pokolbin NSW 2320**

**OVERVIEW**

Experience Audrey Wilkinson through immersive wine experiences. Audrey Wilkinson is one of the oldest vineyards in Pokolbin, first planted in 1866. Offering the best views in the Hunter Valley, Audrey Wilkinson is a must when in the Hunter Valley

**ENTRY, PASS OR TOUR INCLUSIONS**

- Wine expert guides
- Sparkling wine on arrival
- Premium wine tasting
- Sweeping views across 250 acres
- Personalised service

**WHAT TO BRING**

- Enclosed shoes
- Warm clothes in cool weather

**IMPORTANT INFORMATION**

- Experiences depart daily except Xmas and Boxing day
- Experiences range from 60 mins to 120 mins
- Participants must be 18+

**GROUP CAPACITY**

- Groups up to 10pax per booking
- Larger groups on request

**PRODUCT INFORMATION**

- Experiences include a form of food and always a wine tasting
- Some experience include a take home gift
- Experiences operate in all weather

**CONTACT**

Telephone: 61 2 4993 3644

Email: [experience@audreywilkinson.com.au](mailto:experience@audreywilkinson.com.au)

Website: [audreywilkinson.com.au](http://audreywilkinson.com.au)

**2090 Broke Road Pokolbin NSW 2320**

**OVERVIEW**

Hunter Valley Gardens is Australia's largest display garden, offering a special place for the appreciation of nature across 14 hectares in the heart of the Hunter Valley. With ten internationally themed gardens, five rides, a shopping village, aqua golf and putt putt, this multi award winning destination also brings together families and friends for special yearly events such as Christmas Lights Spectacular, Mega Creatures, Mega Creatures Night Safari, Snow Time in the Garden, and Spring School Holidays. There is plenty of fun to be had for the whole family all year round

**ENTRY, PASS OR TOUR INCLUSIONS**

- Entry tickets include access to all themed gardens
- Entry to special events, rides and food are available at an additional cost
- Seniors entry discount is available for garden entry only (not valid for events)

**WHAT TO BRING**

Comfortable walking shoes, a hat, sunscreen, and a camera to capture the beauty. Bring a jacket for cooler evenings and a water bottle to stay hydrated while exploring

**IMPORTANT INFORMATION**

- Opening hours vary seasonally
- Tickets are available online and on site
- Complimentary onsite parking, including disabled parking, is available
- Wheelchair friendly garden paths are on loose gravel
- Check the website before visiting for event schedules, ride availability, and weather updates

**GROUP CAPACITY**

Ideal for individuals, families, and large groups up to 200 guests

**CONTACT**

Telephone: 61 2 4998 4000

Email: [bookings@hvg.com.au](mailto:bookings@hvg.com.au)

Website: [huntervalleygardens.com.au](http://huntervalleygardens.com.au)



Various pick up locations across the Hunter Valley

**OVERVIEW**

Explore the Hunter Valley Your Way — your trusted local guide to wine tours and transport. Travel at your own pace on our Hop-On Hop-Off bus, join a guided food and wine tour, design a bespoke private tour, or hire a bus and driver for the day

**ENTRY, PASS OR TOUR INCLUSIONS**

- Hop-On Hop-Off bus: Self-guided half and full day passes
- Fully guided all-inclusive half and full day tours
- Private Bus Hire & Driver: plan your own itinerary for required hire duration
- Custom Designed Tours: tailored to suit your requirements

**IMPORTANT INFORMATION**

- Operating Hunter Valley wine tours for over 10 years
- Consistently rated #1 on TripAdvisor
- Sit back, relax, and let us take care of the driving while you sip, taste, and savour the very best this world-famous wine region has to offer

**PRODUCT INFORMATION**

Refer to website for full tour details on inclusions, tour start/finish times, age limits & pricing

**GROUP CAPACITY**

- Hop on hop off bus: 3 to 7 guests
- Guided Tours: 3 to 11 guests
- Bus Hire & Custom Tours: 11 & 20 seater bus

**CONTACT**

Telephone: 61 455 535 035  
 Email: [explore@ihophuntervalley.com.au](mailto:explore@ihophuntervalley.com.au)  
 Website: [ihophuntervalley.com.au](http://ihophuntervalley.com.au)



426 McDonalds Road Pokolbin NSW 2320

**OVERVIEW**

Located just 2 hours from Sydney in the heart of Hunter Valley Wine Country, the Wine House is a unique Tasting Room showcasing a large range of premium, family-owned Hunter Valley winemakers, all under the one roof

**ENTRY, PASS OR TOUR INCLUSIONS**

- \$100 for 2 people
- Sparkling on arrival
- Private seated wine tasting
- Select from a range of 16 super -premium wines
- Artisan Tasting Plate (gourmet cheese, charcuterie and condiments)

**IMPORTANT INFORMATION**

- Available 6 days (closed Tuesdays) @ 11:00am, 12:30pm and 2:00pm
- Minimum 2 people | Maximum 12 people
- Duration approx. 90min
- Bookings close 24 hours prior

**GROUP CAPACITY**

2 - 12 guests

**CONTACT**

Telephone: 61 2 4998 7668  
 Email: [visit@winehousehuntervalley.com.au](mailto:visit@winehousehuntervalley.com.au)  
 Website: [winehousehuntervalley.com.au](http://winehousehuntervalley.com.au)



**Flights meet at Peterson House Winery, cnr Broke Road and Wine Country Drive Pokolbin NSW 2320**

**OVERVIEW**

Balloon Aloft offers sunrise balloon flights over the beautiful Hunter Valley vineyards. The multi- award winning balloon flight operator has been flying passengers for 45+ years. Located 2 hours north of Sydney and 45 minutes west of Newcastle

**ENTRY, PASS OR TOUR INCLUSIONS**

- One hour sunrise flight
- Gourmet breakfast at local winery
- Sparkling wine tasting
- Digital inflight photo album
- Insurance and levy
- Digital flight certificate
- Balloon flight with Sydney CBD hotel transfers available

**IMPORTANT INFORMATION**

Ballooning is a weather dependent activity. Hunter Valley flights scheduled daily except on Christmas Day, Boxing Day and New Year's Day. Experience is approximately 3.5 – 4.5 hours including breakfast. Free parking available at flight meeting location

**PRODUCT INFORMATION**

- Panoramic views of local wine regions
- Inflight commentary
- Learn about local history

**WHAT TO BRING**

Clothing suitable for walking or hiking is recommended with enclosed, waterproof shoes. Dress accordingly for early morning temperatures. A hat and sunglasses are recommended as well as a phone or camera to capture the morning's flight experience

**GROUP CAPACITY**

- Balloons generally carry 6-24 passengers
- Group flights up to 250 passengers (subject to availability)

**CONTACT**

Telephone: 61 2 4990 9242 or 1300723279  
 Email: agents@balloonaloft.com  
 Website: balloonaloft.au



**Corner Halls Road and Broke Road Pokolbin NSW 2320**

**OVERVIEW**

Set in the heart of Hunter Valley, Tower Whiskey Distillery crafts premium Australian Single Malt Whiskey in a stunning rustic-luxury setting surrounded by vineyards and rolling hills. The venue also provides a unique setting for personalised weddings and special events. Discover the art of whiskey making from grain to glass. Enjoy guided tastings of handcrafted single malts, aged in American and French oak, all distilled, matured, and bottled on site

**ENTRY, PASS OR TOUR INCLUSIONS**

Tastings include a guided flight of four whiskies, each showcasing unique barrel finishes and cask influences. The average tasting time is 30-40 minutes

**IMPORTANT INFORMATION**

- Open 7 days a week, 11am-5pm
- Bookings encouraged
- Wheelchair accessible
- Free parking available

**PRODUCT INFORMATION**

- Guided tastings
- Hunter Valley views
- Catered celebrations and events

**WHAT TO BRING**

Valid ID required. Guests must be 18 years or older to participate in tastings

**GROUP CAPACITY**

From 2 - 250 guests

**CONTACT**

Telephone: 61 2 4998 4862  
 Email: info@towerwhiskeydistillery.com.au  
 Website: towerwhiskeydistillery.com.au

# BROKENWOOD

HUNTER VALLEY



401-427 McDonalds Road Pokolbin NSW 2320

## OVERVIEW

As a passion project that has evolved into one of Australia's most respected wine labels, Brokenwood Wines is a true example of commitment to excellence. Since our beginning in 1970, we have been one of the leading 5-star Hunter Valley wineries, sourcing premium fruit from 'all the right regions, for all the right reasons'. We pride ourselves on bold ideas driven by a passionate team, to create unparalleled experiences for our customers

## ENTRY, PASS OR TOUR INCLUSIONS

Take your time and enjoy a guided wine and food flight with a selection of six Brokenwood wines matched with bite-sized canapés. Notice how the flavours bring out the best in each carefully selected wine and soak up the atmosphere of Brokenwood's unique Cellar Door. Our Match experience is a great way to see how wine can complement your meal

## IMPORTANT INFORMATION

The experience can begin at anytime between 11am-5pm (Monday-Friday) and 10am-5pm (Saturday & Sunday) with a minimum 1 and maximum 20 people. Suitable for guests over 18. Group quotes available on request

## PRODUCT INFORMATION

Brokenwood Wines is located in the heart of the Hunter Valley wine region, approximately 2.5 hours drive North of Sydney Airport (178km) or 1 hour from Newcastle Airport (68km). The Cellar Door is wheelchair accessible, and also features a onsite electric vehicle charging station

## WHAT TO BRING

Identification

## GROUP CAPACITY

From 1 to 20 guests

## CONTACT

Telephone: 61 4998 7559

Email: [sales@brokenwood.com.au](mailto:sales@brokenwood.com.au)

Website: [brokenwood.com.au](http://brokenwood.com.au)

**VOCO**™ Kirkton Park  
— BY IHG — Hunter Valley



336 Oakey Creek Road Pokolbin NSW 2320

## OVERVIEW

Set on 70 acres of rolling countryside, voco Kirkton Park Hunter Valley is a charming manor estate in the heart of the Wine Country. A quiet, picturesque retreat made for slow mornings and long afternoons

## PROPERTY FEATURES

Our estate features an indoor pool house with spa, tennis and basketball courts, walking trails, and resident animals. Enjoy multiple dining options and unwind in rooms with balconies offering stunning views of the Hunter Valley

## ADDITIONAL FACILITIES

- Reception open 24/7
- Multiple dining options including Epoche Bar, Conservatory Restaurant and Locavore Restaurant
- Bookings essential

## ROOM TYPES

Choose from standard rooms, spacious suites, signature and spa rooms, or accessible options to suit your stay.

## EXTRAS

- Key card access
- Free wifi
- Indoor pool
- EV chargers
- Free parking

## PRODUCT INFORMATION

- Relax in our Wine Lounge while you enjoy your own leisurely wine experience
- Indulge in a selection of super-premium wines from the Hunter's best independent, family-owned winemakers.
- Pair your tasting with a selection of charcuterie and local cheeses
- Hear about the history and wine styles of the Hunter Valley from one of our local wine experts

## CONTACT

Telephone: 61 2 4998 7680

Email: [reservations.kirktonpark@ihg.com](mailto:reservations.kirktonpark@ihg.com)

Website: [huntervalley.vocohotels.com](http://huntervalley.vocohotels.com)

hunter valley



**2213 Broke Road Pokolbin NSW 2320**

**OVERVIEW**

Set among rolling vineyards in the heart of Hunter Valley, Hope Estate is where fine wine, craft beer, premium spirits and unforgettable events meet the thrill of epic concerts and all with sweeping countryside views. Enjoy guided tastings of estate-made wines, fresh craft beers, and small-batch spirits. Host a special occasion or unwind with a drink in hand, surrounded by vines and the electric atmosphere that's hosted legendary acts like Elton John, The Rolling Stones, Bruce Springsteen, and The Killers

**ENTRY, PASS OR TOUR INCLUSIONS**

Tastings include a curated selection of Hope's signature wines, beers, or spirits, with each session lasting around 30-45 minutes. Pricing from \$20pp. For information on hosting weddings, corporate dinners, events, contact the venue for pricing and availability

**WHAT TO BRING**

Valid ID required. Guests must be 18 years or older for tastings

**IMPORTANT INFORMATION**

- Open Wednesday to Sunday, 10am-5pm
- Bookings recommended
- Free parking available

**GROUP CAPACITY**

From 2 to 20,000 guests

**PRODUCT INFORMATION**

- Hosted wine tastings
- 30 beers and ciders on-tap
- Small batch spirits - gin, vodka and liqueurs
- Catered events

**CONTACT**

Telephone: 61 2 4993 3555  
 Email: [info@hopeestate.com.au](mailto:info@hopeestate.com.au)  
 Website: [hopeestate.com.au](http://hopeestate.com.au)

**Corner Broke and McDonalds Road Pokolbin NSW 2320**

**OVERVIEW**

Roche Estate is a premier Hunter Valley destination offering award-winning wine, dining, and entertainment. Enjoy cellar doors, fine restaurants, and world-class concerts in a stunning vineyard setting

**ENTRY, PASS OR TOUR INCLUSIONS**

Entry to Roche Estate is free. Wine tastings, dining experiences, and event tickets can be purchased separately through participating venues and event organisers

**WHAT TO BRING**

Bring comfortable shoes, a hat, sunscreen, and your camera. For concerts, please check with the promoter what items are allowed into the venue as per the event guidelines

**IMPORTANT INFORMATION**

Event access and inclusions vary; check your ticket details before arrival. Parking is available on-site. For large events, allow extra time for entry and transport

**PRODUCT INFORMATION**

Wine, dining, and live entertainment venue

**GROUP CAPACITY**

Ideal for small groups to large-scale concert crowds

**CONTACT**

Telephone: 61 2 4998 4098  
 Email: [enquiries@rocheestate.com.au](mailto:enquiries@rocheestate.com.au)  
 Website: [rocheestate.com.au](http://rocheestate.com.au)

# Stay n' Sip

HUNTER VALLEY



# Harrigan's

HUNTER VALLEY



hunter valley

## Mobile Wine Tasting in the Hunter Valley NSW

### OVERVIEW

Hunter Valley Tourism Operator of the Year 2023 & 2024, Stay n' Sip delivers Australia's most convenient luxury wine tastings. Rare and back-vintage wines are brought directly to accommodation and event venues across NSW

### ENTRY, PASS OR TOUR INCLUSIONS

- Private sommelier-hosted tasting featuring rare boutique and museum Hunter Valley wines
- Individual cheese tasting plates with organic honeycomb and crackers
- Optional wine games or creative experiences
- Premium alcohol-free pairings available

### IMPORTANT INFORMATION

- Available NSW-wide
- Responsible service of alcohol applies

### PRODUCT INFORMATION

- Private mobile wine experience
- 1-2 hour duration

### WHAT TO BRING

Valid ID required. Guests must be 18 years or older for tastings

### GROUP CAPACITY

- 2-30 guests per session
- Larger private and corporate groups on request

### CONTACT

Telephone: 61 0482 693 210

Email: [hello@staynsip.com](mailto:hello@staynsip.com)

Website: [staynsip.com.au](http://staynsip.com.au)

## 2090 Broke Road Pokolbin NSW 2320

### OVERVIEW

Located in the heart of Hunter Valley wine country, Harrigan's Hunter Valley offers a relaxed pub experience with hearty bistro meals, local wines, cold beers, live music, a bottle shop, and accommodation. The 4-star on site accommodation has a range of room sizes suitable for families, individuals, groups and couples. The pub and accommodation are within walking distance of Hunter Valley Gardens, Hunter Valley Gardens Shopping Village, Hunter Valley Gardens Aqua Golf, Roche Estate, and local winery cellar doors

### PROPERTY FACILITIES

Harrigan's Hunter Valley has a contemporary bistro and sports bar, plus a large all-weather alfresco dining area perfect for functions. Dine, drink, and unwind with live music, special events, and seasonal menus. Accommodation and packages that can be bundled up with neighbouring Hunter Valley Gardens events are available

### IMPORTANT INFORMATION

- Open daily from 10am
- Bookings recommended for dining and accommodation
- Bookings essential for functions
- Disabled parking and accessible entry available for pub and accommodation
- Small and large groups welcome for drinks and dining
- Up to 120 guests for functions and events
- Check the website for current specials and entertainment schedule

### EXTRAS

- 4 star rated accommodation
- Accommodation has access to the on-site swimming pool
- Pub and accommodation have complimentary wi-fi
- Key card door entry for accommodation
- Online check-in available for accommodation

### ROOM TYPES

- One bedroom apartment sleeps 2 people
- Two bedroom apartment sleeps 4 people
- Three bedroom apartment sleeps 7 people

### CONTACT

Telephone: 61 2 4998 4300

Email: [reservations@harriganshuntervalley.com.au](mailto:reservations@harriganshuntervalley.com.au)

Website: [harriganshuntervalley.com.au](http://harriganshuntervalley.com.au)



**555 Hermitage Road Pokolbin NSW 2320**

**OVERVIEW**

Spicers Vineyards Estate is a serene Hunter Valley retreat where guests can slow down and reconnect amid vineyard aromas and rustling leaves. Thoughtful touches and warm service create an indulgent, relaxed escape for celebrations or quiet getaways

**PROPERTY FEATURES**

Romantic, intimate Hunter Valley retreat offering vineyard views, luxury suites and serene indulgence

Breakfast Daily at Restaurant Botanica  
Lunch Sat-Sun 12-2pm  
Dinner Wed - Sunday 5.30-8.30pm.

**ADDITIONAL FACILITIES**

Our property has a pool, and complimentary bikes to use during your stay if you wish to cycle around the Hunter Valley

**ROOM TYPES**

- 12 rooms and house
- 10 people capacity for conferences

**EXTRAS**

Book Bed and Breakfast, or one of our many packages available. Onsite day spa, Spa Anise for guests to make a booking and enjoy

**CONTACT**

Telephone: 61 2 6574 7229  
Email: [reservations@salterbrothershospitality.com](mailto:reservations@salterbrothershospitality.com)  
Website: [spicersretreats.com/retreats/spicers-vineyards-estate](http://spicersretreats.com/retreats/spicers-vineyards-estate)



**8 Mistletoe Lane Pokolbin NSW 2320**

**OVERVIEW**

Nestled in the heart of the Hunter Valley, Estate Tuscany offers an unforgettable and peaceful escape. Wake up to breathtaking views of the Brokenback Ranges and rolling vineyards - you may even spot a kangaroo hopping by

**PROPERTY FEATURES**

Boutique accommodation with rustic quirk, dining, and private cooking experiences. Book your hotel room directly with Estate Tuscany and enjoy access to on-site restaurants, bar, pool, cellar door and private guided cooking schools available by pre arrangement

**ADDITIONAL FACILITIES**

- Check in from 2pm, check out by 10am
- On site parking available
- Mill Restaurant
- Brokenback Bar
- Private guided cooking schools require advance booking

**EXTRAS**

Ideal for couples, families or groups up to 120 guests

**WHAT TO BRING**

Bring your luggage, plus friends, family, or just yourself. Explore the vineyards, join a private cooking school, enjoy local wines and unwind across our beautiful estate

**ROOM TYPES**

- 39 Tuscan style guest rooms
- 5 venue options for celebrations

**CONTACT**

Telephone: 61 2 4998 7288  
Email: [stay@estatetuscany.com.au](mailto:stay@estatetuscany.com.au)  
Website: [estatetuscany.com.au](http://estatetuscany.com.au)

# RYDGES

RESORT • HUNTER VALLEY



## 430 Wine Country Drive Lovedale NSW 2325

### OVERVIEW

Escape to Rydges Resort Hunter Valley, where wine country meets endless adventure. From weddings and conferences to family fun, enjoy wineries, waterpark, golf, spa, and seasonal dining. Just two hours from Sydney, let the good times roll

### PROPERTY FEATURES

Experience the Hunter Valley's premier resort, featuring stylish rooms, private villas, a water park, Kids Club, and world-class conference spaces. As the largest events venue in regional Australia, we deliver unforgettable stays and gatherings

### ADDITIONAL FACILITIES

- 24-hour reception
- Hotel and villa bookings essential
- Bookings available at all restaurants and bars
- Free onsite parking
- Resort amenities (pools, waterpark, gym etc) only available for staying guests

### EXTRAS

- 4 Star Resort
- Award Winning
- Family Friendly
- Onsite Brewery, Vineyard, Walking Trails and stables

### WHAT TO BRING

Just bring clothes, a hairbrush, toothbrush, and swimmers! We provide bed linen, blankets, towels, soap, shampoo, conditioner, iron and ironing board

### ROOM TYPES

With both hotel rooms and villas, we offer 18 different room types to suit everyone. From family rooms and suites to pool-access and pool-view options, we have it all

### CONTACT

Telephone: 61 2 4991 0000  
Email: [reservations\\_rydgesresorthuntervalley@evt.com](mailto:reservations_rydgesresorthuntervalley@evt.com)  
Website: [rydges.com/resorthuntervalley](http://rydges.com/resorthuntervalley)



## SPICERS GUESTHOUSE



hunter valley

## 57 Ekerts Road Pokolbin NSW 2320

### OVERVIEW

Spicers Guesthouse sits in the heart of the Hunter Valley, close to vineyards, restaurants and cellar doors—some walkable. A short drive leads to scenic lookouts, boutique producers and bushland trails that open into the valley beyond

### PROPERTY FEATURES

Our property has a pool, and we can organise bikes to hire if you wish to cycle around the Hunter Valley. Our eRemo restaurant is open for breakfast, lunch and dinner 7 days a week

### ROOM TYPES

- 45 rooms and house
- 120 people capacity for conferences

### ADDITIONAL FACILITIES

Relaxed, well-located Hunter Valley retreat offering comfortable, private stays for all travellers

### EXTRAS

Book Bed and Breakfast, or one of our many packages available

### CONTACT

Telephone: 61 2 4022 1801  
Email: [reservations@salterbrothershospitality.com](mailto:reservations@salterbrothershospitality.com)  
Website: [spicersretreats.com/retreats/spicers-guesthouse](http://spicersretreats.com/retreats/spicers-guesthouse)



## THE CONVENT HUNTER VALLEY



88 Halls Road Pokolbin NSW 2320

### OVERVIEW

The Convent Hunter Valley is a boutique luxury retreat blending heritage charm with modern comfort. Set among vineyards and gardens, it offers elegant rooms, fine dining, and tranquil surrounds, perfect for romantic getaways or relaxing wine-country escapes

### PROPERTY FEATURES

Elegant rooms with stunning vineyard and garden views for a relaxing Hunter Valley stay. Book room only or Bed and Breakfast. Many packages are also available.

- Breakfast Daily at The Convent
- Lunch Fri - Sat 12:00pm-4pm
- Dinner Tues - Sat 5:30pm-10pm

### ADDITIONAL FACILITIES

Take advantage of a range of special Hunter Valley boutique accommodation offers for leisure guests, corporate travellers, food & wine lovers, couples, families and guests who wish to relax and unwind

### EXTRAS

- Free WiFi
- High speed internet connection is available via our WiFi network
- Complimentary parking available onsite
- Reception open seven days a week

### ROOM TYPES

- 19 Rooms
- 20 people for Conferences
- Deluxe, premier and superior rooms

### CONTACT

Telephone: 61 2 4998 4999  
 Email: [reservations@convent.com.au](mailto:reservations@convent.com.au)  
 Website: [worldsapart.club/independents/convent](http://worldsapart.club/independents/convent)

## MERCURE HOTEL

HUNTER VALLEY GARDENS



Corner Broke and McDonalds Roads Pokolbin NSW 2320

### OVERVIEW

Nestled in the heart of Hunter Valley Wine Country, Mercure Hunter Valley Gardens offers 4½-star accommodation with 72 rooms, premium dining at éléments bar & dining, and access to the region's best wineries and attractions. We also offer premium function spaces perfect for weddings and conferences

### PROPERTY FEATURES

Situated next to Australia's largest display garden, enjoy large rooms and resort style facilities with access to the pool and sauna, courts for tennis, futsal and basketball, a kids gaming room, and sprawling manicured gardens. Dining options include the acclaimed éléments bar & dining, featuring locally inspired seasonal menus. Our rustic style function spaces are perfect for weddings with 15-120 guests, with flexible packages to make your special day affordable and tailored to fit your style. We also offer conference spaces for 2-300 people, with business facilities and spaces perfect for team building activities

### EXTRAS

- 4½ star hotel accommodation
- Key card door entry
- Reverse cycle air conditioning
- Refrigerator
- Tea and coffee making facilities.
- Remote control television
- Iron and ironing board
- Hair dryer
- Complimentary wi-fi

### ROOM TYPES

- The Studio Room is available in king or twin bedding configurations with a private balcony.
- The Superior Room sleeps two adults, a sunken bath, glass atrium and private courtyard.
- The Deluxe Room sleeps two and features a king bed, spa bath and private terrace.
- The Suites are individually designed and offer a standard of luxury that is second to none

### IMPORTANT INFORMATION.

- Booking is essential for all stays, functions and dining
- Check-in from 2pm / check-out 10am
- Breakfast and dinner available at éléments bar & dining
- On site parking, including disabled parking, is complimentary

### CONTACT

Telephone: 61 2 4998 2000  
 Email: [reservations@mrhvg.com.au](mailto:reservations@mrhvg.com.au)  
 Website: [mercurehuntervalley.com.au](http://mercurehuntervalley.com.au)



# port stephens



Port Stephens is an idyllic coastal destination where giant sand dunes, tranquil bays and stunning coastline provides the backdrop for exhilarating experiences.

Get up close to the bottlenose dolphins and marine life that reside in the bay on a cruise, see koalas in their natural habitat or take in the stunning coastal views from vantage points.

The incredible coastline, dotted with 26 beaches and bay twice the size of Sydney Harbour, is the perfect playground for dolphins and whales and a spectacular natural water park to explore.

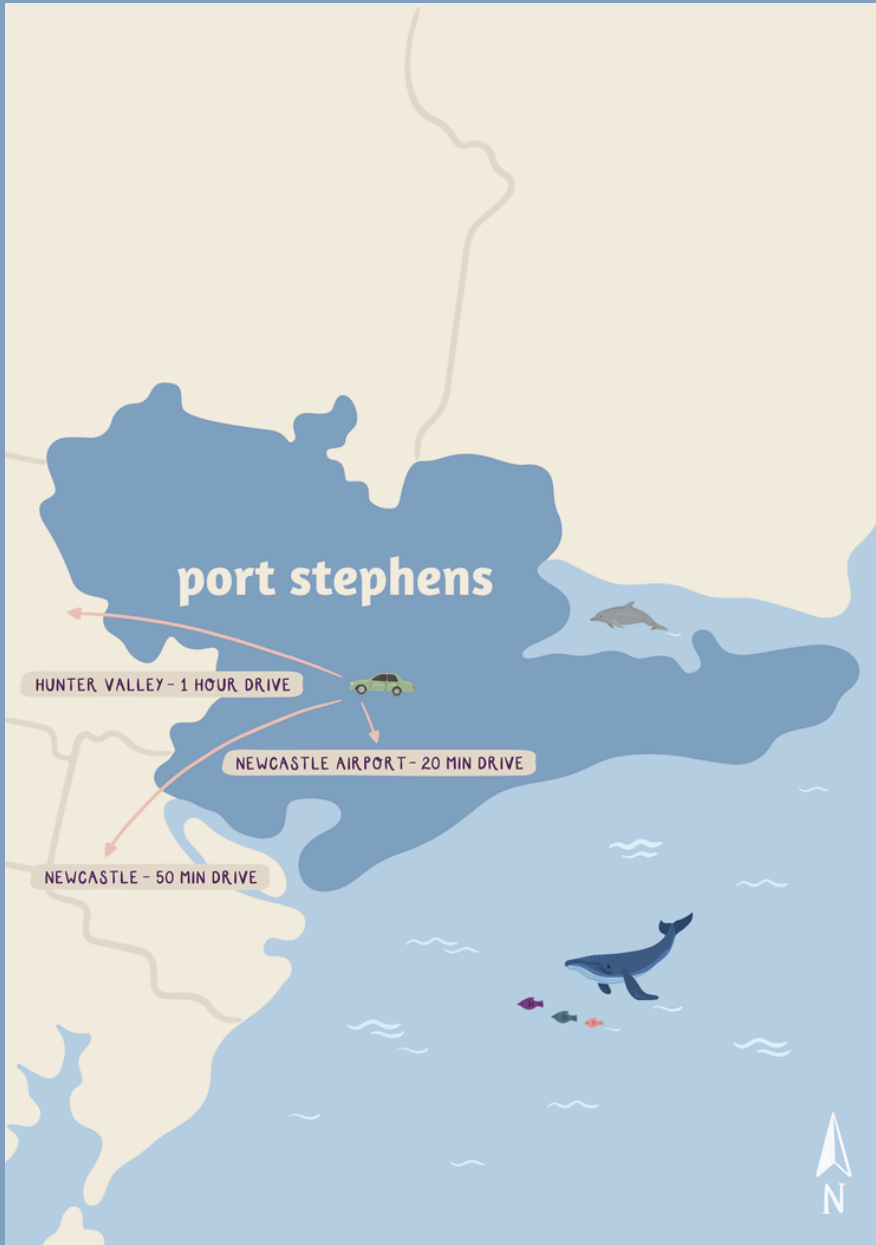
Visit the Worimi Conservation Lands to see the Southern Hemisphere's largest moving coastal sand dunes where you can sand board, ride a camel or take a guided quad bike tour and learn about the local Aboriginal culture.



Distance from Newcastle: 60kms, 1 hour drive

Distance from Sydney: 215kms, 2.5 hours drive

# key experiences



## Food & Beverage

- Brewery & winery
- Fresh local seafood
- Restaurants & cafes

## Nature & Wildlife

- Koala sanctuary
- Tomaree Coastal Walk
- Wildlife park
- National Park & Worimi Conservation Lands

## Aquatic & Coastal

- Dolphin watch cruise
- Whale watching (May-Nov)
- Bay & surf beaches
- Water activities including kayaking, paddle boarding, snorkelling and swimming

## Aboriginal Experiences

- Cultural centre
- Guided cultural quad bike tour



**Lower Carpark of James Patterson Street Anna Bay NSW 2316**

**OVERVIEW**

You will board our custom-built, off-road vehicles for the short, bouncy ride into the largest moving sand mass in the southern hemisphere. The dunes stretch 32 kilometers, that's the entire length of Stockton Beach and can reach over 40-50 meters high, that's like a 10-story building. The views alone are spectacular! Once in the dunes, our team will give you a rundown on sandboarding and how to use our handmade custom-designed boards for maximum speed (and safety!) then you are off. Climb to the top of the dunes, jump on your sandboard, slide on down, then repeat! Don't forget to bring your camera to capture amazing Port Stephens holiday snaps

**ENTRY, PASS OR TOUR INCLUSIONS**

- Meeting Points: Lower Carpark Stockton Beach
- 4WD Tour of Stockton Sand Dune
- Sandboard hire
- Sandboarding instruction
- Unlimited Sandboarding

**IMPORTANT INFORMATION**

- Tour departs daily (except Christmas Day)
- Operates in rain, hail or shine
- No toilet facilities in the sand dunes, so better use it before joining tour

**PRODUCT INFORMATION**

- Unlimited sandboarding experience in the biggest sand dune system in Southern Hemisphere
- Tour departs every 30min
- No age limit (little kids also enjoy sandboarding in smaller dune)
- No experience required (everyone can enjoy sandboarding from very first time)

**WHAT TO BRING**

Comfortable shoes (you will be taking off shoes anyway), sunglasses, hat, towel, camera, drinks, sunscreen

**GROUP CAPACITY**

Each bus can take up to 21 customers (6 vehicles running)

**CONTACT**

Telephone: 61 2 4981 9352  
 Email: 4wdtoursrus@gmail.com  
 Website: 4wdtoursrus.com.au

**Shop 3/35 Stockton Street Nelson Bay NSW 2315**

**OVERVIEW**

Aquamarine Adventures is Port Stephens' premium small group eco cruise operator, unique all year-round cruises from express Dolphin & Whale watching, island snorkelling adventures, stunning trips to Fingal Island to explore the lighthouse and private charters, cruising onboard our vessel Envision

**ENTRY, PASS OR TOUR INCLUSIONS**

- Professional and local crew, with live commentary
- Up close & personal wildlife viewing
- Spacious unobstructed 360 degree viewing with both undercover and outdoor seating
- Suitable for all ages and family friendly

**IMPORTANT INFORMATION**

- Cruises depart in rail, hail or shine.
- Cruises depart daily (subject to sea conditions) every day except Christmas Day
- Additional tours available during peak seasons & school holidays
- Parking options available close to cruise departure locations

**PRODUCT INFORMATION**

- Cruises depart daily from Dock C, d'Albora Marina, Nelson Bay in Port Stephens
- Scenic views over the harbour of Port Stephens
- Spacious unobstructed 360 degree viewing with both undercover and outdoor seating

**WHAT TO BRING**

- Warm & comfortable clothing
- Hat
- Sunglasses
- Sunscreen
- Camera
- If worried about seasickness, please see your local pharmacy for seasickness preventatives

**GROUP CAPACITY**

Envision - 20 passengers

**CONTACT**

Telephone: 61 2 4980 4333  
 Email: info@aquamarineadventures.com.au  
 Website: aquamarineadventures.com.au



### Shop 3/35 Stockton Street Nelson Bay NSW 2315

#### OVERVIEW

Moonshadow-TQC Cruises is Port Stephens' premier cruise operator, established for over 44 years offering unique all year-round dolphin watching, whale watching (May-Nov), island adventures and private charters, cruising all year-round from Nelson Bay

#### ENTRY, PASS OR TOUR INCLUSIONS

- Professional and local captains, with live commentary
- Licensed bar & snacks foods available onboard
- Boom-net rides
- Spacious viewing decks & indoor seating
- Suitable for all ages and family friendly

#### IMPORTANT INFORMATION

- Cruises depart in rail, hail or shine
- Cruises depart daily (subject to sea conditions) every day except Christmas Day
- Additional tours available during peak seasons & school holidays
- Parking options available close to cruise departure locations

#### PRODUCT INFORMATION

- Cruises depart daily from Nelson Bay Marina, Port Stephens, NSW.
- Scenic views over the harbour of Port Stephens
- Multi-level viewing decks with both inside & outdoor areas
- Fully licensed bars with snack food available

#### WHAT TO BRING

- Warm & comfortable clothing
- Hat, sunglasses and sunscreen
- Camera
- If worried about seasickness, please see your local pharmacy for seasickness preventatives

#### GROUP CAPACITY

- Moonshadow V – 300 passengers
- Hinchinbrook Explorer - 260 passengers
- Moonshadow IV - 250 passengers
- MV Osprey – 145 passengers
- MV Spirit of Port - 136 passengers
- MV Spirit - 148 passengers
- Envision - 20 passengers

#### CONTACT

Telephone: 61 2 4984 9388

Email: [info@moonshadow-tqc.com.au](mailto:info@moonshadow-tqc.com.au)

Website: [moonshadow-tqc.com.au](http://moonshadow-tqc.com.au)



### 3 Oakvale Drive Salt Ash NSW 2318

#### OVERVIEW

Experience the journey into conservation and sustainability at Oakvale Wildlife Park, located in Salt Ash, just two hours north of Sydney, 30 minutes north of Newcastle and 10 minutes from Newcastle Airport. As a family-owned and operated wildlife park, it spans 25acres of natural bushland and is home to over 110 diverse animal species

#### ENTRY, PASS OR TOUR INCLUSIONS

- General entry into Oakvale Wildlife Park
- Unlimited access to Splash Bay Water Park
- Access to all scheduled presentations and farmyard feeding demonstration
- Tractor trailer ride
- Open spacious grounds
- Complimentary use of BBQs
- Shaded playgrounds

#### IMPORTANT INFORMATION

- 11.00am – Farmyard presentation – learn about caring for young farm animals, observe cow milking and enjoy a scenic tractor ride
- 12.00noon- Educational Reptile Talk
- 12.30pm – Educational Koala Talk
- 2.00pm - Farmyard presentation – learn about caring for young farm animals, observe cow milking and enjoy a scenic tractor ride
- 2.30pm – Educational Tasmanian Devil Talk
- 3.00pm – Educational Cassowary Talk
- Opens daily at 10.00am and closes 5.00pm (except Christmas Day)
- Last entry into the park is 4.00pm

#### WHAT TO BRING

- Sunglasses
- Sunscreen
- Water
- Camera

#### PRODUCT INFORMATION

- Private Educational Wildlife Session\*
- Souvenir Photo Centre\*
- Private Tractor ride\*
- VIP Tours\*
- Group/Corporate Catering\*
- Souvenirs\*
- Food and Beverage outlet\*

\*Additional charge applies

#### CONTACT

Telephone: 61 2 4982 6222

Email: [info@oakvalewildlife.com.au](mailto:info@oakvalewildlife.com.au)

Website: [oakvalewildlife.com.au](http://oakvalewildlife.com.au)

# PORT STEPHENS

Adventure on the Dunes 4WD TOURS



port stephens



Lower Carpark of James Paterson Street Anna Bay NSW 2316

## OVERVIEW

Discover the thrill of adventure with Port Stephens 4WD Tours - the longest operating 4WD company in the region. Family-owned and operated, we take you across the breathtaking Worimi Conservation Lands, also known as the Stockton Sand Dunes, showcasing the beauty and history of this incredible coastal landscape. From exhilarating sandboarding experiences to unforgettable views, our tours offer more than just a ride - they're a journey into the heart of Worimi Country. Perfect for families, groups, or solo explorers, we're proud to share this unforgettable destination with you

## ENTRY, PASS OR TOUR INCLUSIONS

- Sandboards, water and shade
- Transport to and from the sand dunes in a custom built 4WD vehicle
- Knowledgeable Guides
- Professional instruction and supervision
- Unlimited sandboarding time
- Commentary and pipi digging (on beach and dune tour only)

## IMPORTANT INFORMATION

- Tours depart daily (subject to weather conditions and beach access) except Christmas Day
- Opening hours 9:30am - 3:30pm
- Sandboarding tours are unlimited, except our 3:30pm tour which lasts 1 hour
- Beach & Dune tours approximately 75 minutes
- Pets not permitted due to National Park rules

## GROUP CAPACITY

132 total in one shuttle (21 per 4WD bus, 6 per landcruiser)

## WHAT TO BRING

- Hat, sunglasses and sunscreen
- Extra water
- Camera / phone
- Jacket / beanie for winter months

## PRODUCT INFORMATION

- Custom built all terrain 4WDs fitted with working seatbelts and air-conditioning
- Standup sandboarding strictly prohibited
- Multiple tour options to suit your needs
- Knowledgeable drivers with commentary about the history of the area

## CONTACT

Telephone: 61 2 4984 4760

Email: [info@portstephens4wd.com.au](mailto:info@portstephens4wd.com.au)

Website: [portstephens4wd.com.au](http://portstephens4wd.com.au)

Murrook Culture Centre 2163 Nelson Bay Road, Williamstown NSW 2318

## OVERVIEW

Sand Dune Adventures (SDA) is owned & operated by the Worimi Local Aboriginal Land Council. Offering Quad Bike and 4WD Tours, Sand Dune Adventures is a unique experience with 'exclusive access' to the highest moving coastal sand dunes in the Southern Hemisphere escorted by Aboriginal Guides

## 1 HOUR QUAD BIKE EXPERIENCE TOUR INCLUSIONS

- Quad Bike Induction
- Quad bike riding on Stockton Beach
- Quad bike tours are tailored to meet the needs and experience of the customer
- Riding safely from bush to beach
- Experienced Guides
- Private group tours available on request
- Cater for special interest groups and the education market

## 1.5HR ABORIGINAL CULTURE TOUR\*

- Quad bike experience inclusions (above)
- Visit Aboriginal Midden sites and hear the stories of the Worimi people
- Learn about and experience bush resources
- Visit fresh water lagoons and hear of their stories
- Escorted and narrated by Worimi guides

\*Culture Tours are subject to availability on request

## WHAT TO BRING

- Sunglasses
- Sunscreen
- Enclosed shoes
- Long pants
- Water

## GROUP CAPACITY

- Quad Bike experience - min 2, max 20
- Cultural Quad Bike Tour - min 4, max 20 (subject to availability)

## IMPORTANT INFORMATION

- Tours depart daily Monday - Sunday 9.30am, 11am, 2.30pm
- Minimum of 2 passengers to maximum of 20 passengers
- Bookings are required prior to your preferred day
- Arrive 30 minutes prior to your set departure time
- Not available Christmas Day and New Years Day

## PRODUCT INFORMATION

- 400cc quad bikes
- Sand dunes can be from 40-100 feet high
- 2 seater quad available on request

## CONTACT

Telephone: 61 2 4033 8808

Email: [sda@worimi.org.au](mailto:sda@worimi.org.au)

Website: [sandduneadventures.com.au](http://sandduneadventures.com.au)



2 Jessie Road Anna Bay NSW 2316

**OVERVIEW**

An educational, hands-on aquarium with a conservation mission, offering immersive encounters with amazing marine species. Just 20 minutes from Newcastle Airport and ranked 12 out of 1000 on Tripadvisor for Greater Hunter Region. Guests step into the water to connect, learn and inspire

**ENTRY, PASS OR TOUR INCLUSIONS**

- Entry into the lagoons in bare feet
- Shark food at various feeding locations
- Interaction with the animals (feeding & petting)
- Educational talks with keepers always present for personalised visitor attention
- Optional upgrades available. Bookings essential

**IMPORTANT INFORMATION**

- Open 9am – 5pm daily (Closed Christmas Day)
- Flat wide paths throughout
- Hot showers
- Ample bus and coach parking

**PRODUCT INFORMATION**

- Guided or self-guided experiences
- Allow 1-3 hours depending on activity
- Interaction with unique marine species



**WHAT TO BRING**

- Shorts/skirt or clothing that can be easily rolled up
- Towel, swimwear and camera/go pro
- Hat and reef safe sunscreen
- Bring spare change of clothes

**GROUP CAPACITY**

- 13 pax+ groups in peak periods self-guide
- Min 13, max 70 with guide (outside peak periods)
- Snorkel 10 max
- Encounters 6 max

**CONTACT**

Telephone: 61 2 4982 2476  
 Email: info@sharkencounters.com.au  
 Website: sharkencounters.com.au



562 Gan Gan Road One Mile NSW 2316

**OVERVIEW**

Port Stephens Koala Sanctuary is a unique opportunity to visit koalas in their natural habitat and learn about their care, rehabilitation and survival. Experience our self guided Sanctuary Storywalk, view the state of the art Koala Hospital and venture onto the elevated Skywalk

**ENTRY, PASS OR TOUR INCLUSIONS**

- General entry into the Sanctuary covers a self-guided tour of the grounds.
  - Interactive educational sanctuary Storywalk that tells the story of the koalas and their habitat
  - Views into the Koala Hospital where dedicated staff work to protect and care for koalas
  - Fat Possum has a selection of grab'n'go lunch, snacks and drinks
  - Rest room facilities
  - Table and chairs undercover
  - Accessible attraction
  - Knowledgeable volunteer guides
  - Souvenirs and gift shop\*
- \*additional charges apply*

**WHAT TO BRING**

- Sunglasses
- Sunscreen
- Water
- Camera
- Insect repellent
- Comfortable walking shoes

**IMPORTANT INFORMATION**

- We recommend allowing 1 to 1.5 hours to visit the sanctuary
- Private 45mins guided tours with a koala expert. Charges apply, bookings essential
- Open daily from 9am-5pm
- Last entry into the park is 4pm
- Sanctuary Skywalk viewing platform closes 4.45pm
- Winter Trading Hours – June – August – 9am-4pm
- Closed Christmas Day and New Years Day

**GROUP CAPACITY**

- Group tours - minimum 10 per group
- Large groups can be accommodated with multiple guides

**CONTACT**

Telephone: 61 2 4988 0800  
 Email: traveltrade@portstephens.nsw.gov.au  
 Website: portstephenskoalasansuary.com.au



**2 Jessie Road Anna Bay NSW 2316**

**OVERVIEW**

This is the only permitted wild dolphin swim in New South Wales, and the first swim of its kind in the world! Located in the stunning Port Stephens region and depart from Nelson Bay where we go offshore and swim with wild oceanic common dolphins! Come and join the pod to witness TRUE wild dolphin behaviour! The dolphins don't just swim past you, they swim WITH you for a long, interactive and mind-blowing experience! This is the safest and most harmonious way to swim with wild oceanic dolphins! They get a free ride and are having just as much fun as we are, and most importantly - are free to swim away at any point!

**ENTRY, PASS OR TOUR INCLUSIONS**

- All equipment including wetsuit, snorkel, mask & safety harness)
- Full on-board training
- 4.5 hour cruise on 52ft catamaran
- Champagne brunch
- Tea / coffee
- All above water photos
- Customised underwater and above water video of your experience
- Knowledgeable guides with educational commentary

**WHAT TO BRING**

- Hat, sunscreen, sunglasses
- Extra water
- Camera/phone
- Swimwear and change of clothing
- Towel

**GROUP CAPACITY**

36 passengers in total – 24 swimmers and 12 observers at one time

**IMPORTANT INFORMATION**

- Max 24 swimmers and 12 observers on each boutique tour
- Seasonal October – April
- Weather and sea condition dependant
- Option to observe only and not swim with dolphins

**CONTACT**

Telephone: 1300 721 358  
 Email: [info@dolphinswimaustralia.com.au](mailto:info@dolphinswimaustralia.com.au)  
 Website: [dolphinswimaustralia.com.au](http://dolphinswimaustralia.com.au)



**Lower Car Park End of James Paterson Street Anna Bay NSW 2316**

**OVERVIEW**

Sand Dune Safaris is a family owned and operated company offering safari and sandboarding tours on Port Stephens' stunning Stockton Sand Dunes with 4WD access, personalised guides, stand up and sit down sandboarding and fun for all ages

**ENTRY, PASS OR TOUR INCLUSIONS**

- 4WD dune access
- Sandboarding/sand surfing instruction
- Shaded picnic area and regular shuttle service to dunes
- Tin City Safari and private charter options also available

**WHAT TO BRING**

- Water and sun protection (hat/sunscreen)
- Comfortable shoes, clothes you don't mind getting sand on
- Snacks/lunch for picnic time
- Camera/phone to capture memories

**PRODUCT INFORMATION**

- Sit down and stand up sandboarding & tours on Australia's largest moving dunes
- Multiple tour options to suit your needs
- Knowledgeable drivers with commentary about the history of the area

**GROUP CAPACITY**

- Up to 120
- Small groups for personalised experiences (varies per tour)

**IMPORTANT INFORMATION**

Tours available daily but are subject to weather conditions; extreme heat or storms may affect operations. Suitable for all ages but dress for outdoor conditions

**CONTACT**

Telephone: 61 0425 213 096  
 Email: [sanddunesafaris@live.com.au](mailto:sanddunesafaris@live.com.au)  
 Website: [sanddunesafaris.com.au](http://sanddunesafaris.com.au)



### 24 Shearwater Drive Taylors Beach NSW 2316

#### OVERVIEW

A premium, guided coastal wellness journey combining meditation, movement, breath-work, and iconic nature experiences in the Tomaree and Port Stephens region of New South Wales. This immersive experience weaves together meditation, breath work, mindful movement, gentle adventure, cultural respect, and deep nature connection. Professionally guided and carefully paced, the experience blends wellness practice with storytelling, silence, sensory immersion, and coastal exploration, creating a powerful connection between people and place

#### ENTRY, PASS OR TOUR INCLUSIONS

- Signature nature-based wellness experiences
- Combines meditation, breath work, gentle movement and mindful walking
- Includes visits to iconic locations: Tomaree Head Ceremony Site, Tomaree headland Summit, Biography Rocky Fingal Bay and the Port Stephens Koala Sanctuary
- Showcases dramatic coastal landscapes and native Wildlife in a single experience
- Professionally guided with a strong focus on wellbeing, connection and slow travel
- Suitable for a half day or full day premium add on experience
- Food and Beverage Inclusions Nutritious morning tea, water and iced beverage, picnic lunch
- Inclusions: All National Parks entry fees port Stephens Koala Sanctuary entry and transport if required

#### GROUP CAPACITY

20 people per tour and multiple tours daily with 30min intervals

#### IMPORTANT INFORMATION

If affected by inclement weather or restrictions by National Parks Park closures, tour experiences will differ. Port Stephens Koala Sanctuary offers a sheltered experience if cancellation is necessary

#### WHAT TO BRING

Comfortable and light weight attire suitable for movement, walking shoes, hat, sunglasses. Sunscreen and insect repellent if required is provided

#### CONTACT

Telephone: 61 0412 140 760

Email: [hello@wildlightexperiences.com.au](mailto:hello@wildlightexperiences.com.au)

Website: [wildlightexperiences.com.au](http://wildlightexperiences.com.au)

### 562 Gan Gan Road One Mile NSW 2316

#### OVERVIEW

Set within a bushland, the Port Stephens Koala Sanctuary is conveniently located just 2.5hrs north of Sydney and offers the opportunity to connect with koalas while directly finding their protection and conservation efforts. Stay overnight in our award winning, eco-friendly accommodation, and wake up with koalas. Enjoy an exclusive guided morning tour and experience the stunning 225 metre Sanctuary Skywalk that provides treetop views into the koala's natural habitat

#### PRODUCT INFORMATION

- Unlimited access to the Port Stephens Koala Sanctuary and Skywalk providing treetop views of our resident koala's and exclusive morning tour prior to opening hours
- Nature Based accommodation
- Bushland Views
- Fat Possum Café for grab 'n' go meals
- Resort style pool and heated spa
- Direct access to Tomaree Coastal Walk
- Choice of glamping tents or hotel style accommodation
- BBQ facilities on site
- Pre-ordered breakfast box and dinner box optional (charges apply)
- Every visit funds koala conservation programs
- Centrally located to a range of Port Stephens attractions

#### IMPORTANT INFORMATION

- Reception open daily – 9am-5pm
- Check in 2pm, Check out 10am
- Afterhours check in available
- Free WIFI
- Free parking (outdoor)
- Pets are not permitted on site

#### ROOM TYPES

- 20 glamping tents with balcony, ensuite and air conditioning
- 20 Hotel style rooms and studios
- All rooms have kitchenette facilities with microwave, sink, toaster, bar fridge, kettle
- TV in all rooms
- Accessible rooms

#### CONTACT

Telephone: 61 2 4988 0800

Email: [traveltrade@portstephens.nsw.gov.au](mailto:traveltrade@portstephens.nsw.gov.au)

Website: [portstephenskoalasantuary.com.au](http://portstephenskoalasantuary.com.au)



3 Government Road Nelson Bay NSW 2315

**OVERVIEW**

Beautifully styled boutique accommodation, renowned local eatery The Little Nel located onsite and a prime location only 2 minutes walk to Nelson Bay's best restaurants, shopping and attractions - there is little wonder why Hotel Nelson is Port Stephens most popular destination for travellers seeking a real coastal holiday

**PROPERTY FEATURES**

- 12 metre outdoor heated swimming pool
- Air conditioned exercise room
- Free weights and machines in exercise room
- Steam room
- BBQ facilities
- TESLA charging
- Bocce lawn
- Bike Hire
- On site Café, Little Nel, (breakfast and lunch)

**EXTRAS**

- Spa access
- Tennis hire
- Upgraded rooms
- Late checkout
- Coastal tours

**ROOM TYPES**

- Family rooms
- Garden View Rooms
- Town View Rooms
- Accessible rooms

**IMPORTANT INFORMATION**

24hr self check ins from 10am

**CONTACT**

Telephone: 61 2 4916 4600

Email: hello@hotelnelson.com.au

Website: hotelnelson.com.au

26 Corlette Point Road Corlette NSW 2315

**OVERVIEW**

Experience Hamptons style luxury at The Anchorage Port Stephens, a breezy seaside haven overlooking one of the world's most beautiful ports. Enjoy waterfront suites, local dining, two pools and a decadent day spa in an idyllic coastal setting

**PROPERTY FEATURES**

- Luxury Hotel
- Waterfront Views
- The Galley Kitchen restaurant
- Moby's Bar
- Poolside Bar (open during summer months)
- Spa Lucca
- In-room dining
- Main swimming pool
- Daily Breakfast
- Adults-only infinity pool
- Parking
- Wi-Fi

**IMPORTANT INFORMATION**

- Check in 3.00pm
- Check out 11.00am
- Non-smoking property

**ROOM TYPES**

- 80 rooms in total
- Anchorage family rooms
- Loft suite
- Loft two bedroom suite
- Captain suite
- Master suite
- Self contained villa
- Accessible rooms

**CONTACT**

Telephone: 61 2 4984 2555

Email: info@anchorageportstephens.com.au

Website: anchorageportstephens.com.au

# BANNISTERS

port stephens



**147 Soldiers Point Road Soldiers Point NSW 2317**

## OVERVIEW

Surrounded by water and native koala habitat, Bannisters Port Stephens restores retro '60s-'70s style into a chic boutique hotel featuring coastal-chic rooms, an infinity pool and outstanding dining

## PROPERTY FEATURES

- Infinity edge pool overlooking the bay
- Onsite day-spa
- Three restaurants/bars (including dining by Rick Stein)
- Free WiFi
- Free onsite parking
- EV chargers

## IMPORTANT INFORMATION

- Check-in from 3 pm / check-out 11 am.
- Reception phone (02) 4919 3800.
- Free parking, lift access, accessible rooms on request
- Two onsite dining venues: Rick Stein and Julio's

## CONTACT

Telephone: 61 2 4919 3800  
Email: [portstephens@bannisters.com.au](mailto:portstephens@bannisters.com.au)  
Website: [bannisters.com.au/port-stephens](http://bannisters.com.au/port-stephens)

# OAKS.

Hotels, Resorts & Suites



**20 Tomaree Street Nelson Bay NSW 2315**

## OVERVIEW

Perfect for the entire family, Oaks Nelson Bay Lure Suites is set in the heart of Nelsons Bay, conveniently located near Newcastle airport. The self-contained accommodation is on the doorstep to all the adventures and relaxation that the idyllic holiday spot has to offer, with one and two-bedroom apartments available with inclusive Wi-Fi and TV with streaming capabilities

## PROPERTY FEATURES

- Outdoor pool
- Heated spa and gym
- BBQ areas
- Landscaped gardens
- Undercover parking
- Close access to beaches, the marina and coastal walking trails

## IMPORTANT INFORMATION

- Parking onsite
- Short walk to cafés and the marina

## CONTACT

Telephone: 61 2 4980 4888/1300 669 480  
Email: [lure@theoaksgroup.com.au](mailto:lure@theoaksgroup.com.au)  
Website: [oakshotels.com/en/oaks-lure](http://oakshotels.com/en/oaks-lure)

port stephens

# OAKS.

Hotels, Resorts & Suites

port stephens



265 Sandy Point Road Salamander Bay NSW 2317

## OVERVIEW

Oaks Port Stephens is an idyllic haven nestled in Salamander Bay and a short drive away from Nelson Bay. Enjoy our retreat surrounded by sheltered waterways, golden beaches, and pristine national parks. Our resort stands as a testament to laid-back luxury, boasting one of the largest swimming pools in Australia and offering the best in Port Stephens accommodation

## PROPERTY FEATURES

- Lagoon pool,
- Heated spa, steam room, sauna and gym
- Tennis courts
- Walking paths
- Poolside lounging
- Close access to beaches and coastal activities

## IMPORTANT INFORMATION

Complimentary parking available onsite (subject to availability)

## ROOM TYPES

- Studios
- One and two-bedroom apartments with kitchenettes or full kitchens, living areas, balconies or courtyards
- Lagoon-side access in select rooms

## EXTRAS

- Spa access
- Tennis hire
- Upgraded rooms
- Late checkout
- Coastal tours

## CONTACT

Telephone: 1300 669 978

Email: [pacificblue@theoaksgroup.com.au](mailto:pacificblue@theoaksgroup.com.au)

Website: [oakshotels.com/en/oaks-pacific-blue-resort](http://oakshotels.com/en/oaks-pacific-blue-resort)







The Central Coast, one of Australia's first ECO Certified destinations at the Ecotourism level, is a vibrant region dotted with inviting waterways, pristine beaches and lush hinterland – the first stop north of Sydney, just 45 minutes away.

From the charming seaside towns known for their vibrant cafes and surf culture, to the serene beauty of Bouddi National Park, the Central Coast offers a diverse array of experiences from thrilling water sports and hiking trails to kayaking or horse riding.

This region boasts a vibrant culinary scene with a mix of seaside cafes, gourmet restaurants, boutique breweries and a botanical distillery. Explore the Central Coast Makers Trail for a self-indulgent food and drink discovery. Meet skilled artisans, enjoy gourmet tastings, and behind-the-scenes tours or take a pearl and oyster farm tour to learn about pearl farming and enjoy oyster tasting.



Distance from Newcastle: 70kms, 1 hour drive

Distance from Sydney: 56kms, 45 min drive

# key experiences



## Food & Beverage

- Botanical winery, distilleries and breweries
- Cheese, chocolate and oyster tastings
- Pick your own produce
- Eateries from headland to hinterland



## Aquatic & Coastal

- 15 patrolled beaches
- Kayaking, diving & surfing
- Coastal walks & cycling trails



## Nature & Wildlife

- Bouddi Coastal Walk
- NSW's only pearl farm
- Wildlife parks & whale watching cruises
- Eco-friendly Pelican Time
- Native arboretum & Japanese gardens



## Heritage & Culture

- Guided walking tours
- Ancient Aboriginal rock engravings
- Historic Norah Head Lighthouse
- Art galleries
- The Long Jetty



**Pacific Highway Somersby NSW 2250**

**OVERVIEW**

Winner of the Best Tourist Attraction award, the Australian Reptile Park offers expert keeper interactions and hands-on experiences with Australia's most iconic and rare wildlife. Located an hour south of Newcastle on the M1

**ENTRY, PASS OR TOUR INCLUSIONS**

General admission includes all-day access to the park, free live wildlife shows, and fun for the whole family! Guests can purchase behind-the-scenes tours including the Conservation Tour, Koala Encounter and Venom Encounter for rare and intimate wildlife experiences

**IMPORTANT INFORMATION**

- Open daily 9am to 5pm except Christmas Day
- Accessible paths throughout the property
- Pre booking recommended for behind the scenes tours and encounters
- Free parking
- Onsite kiosk

**PRODUCT INFORMATION**

- Both self-guided and guided visits are available
- Wildlife shows and encounters run daily
- Free range kangaroos to pat and feed

**WHAT TO BRING**

Bring comfortable shoes, weather ready clothing, a hat, sunscreen, a camera, and water.

**GROUP CAPACITY**

Inbound groups welcomed with no maximum capacity and itineraries can be tailored to individual needs

**CONTACT**

Telephone: 61 2 4340 1022  
 Email: admin@reptilepark.com.au  
 Website: reptilepark.com.au



**BROKEN BAY**

PEARL FARM



**12 Kowan Road Mooney Mooney NSW 2083**

**OVERVIEW**

Broken Bay Pearl Farm, NSW's only pearl farm, offers a unique look at rare Australian pearls. Just 45 minutes from Sydney, visitors explore the Shellar Door, cruise the Hawkesbury to see oyster leases, learn its rich heritage, and enjoy fresh local oysters

**ENTRY, PASS OR TOUR INCLUSIONS**

- Discover the secrets of pearl and oyster farming
- Scenic cruise of lower Hawkesbury River
- Visit an oyster lease
- Enter restricted-access pearl grading room
- Learn the visible and invisible virtues of Australian pearls
- Guided oyster tasting
- Oyster shucking demonstration
- Tours from \$35pp

**IMPORTANT INFORMATION**

- Open Tuesday to Sunday (school holidays open 7 days a week)
- Bookings are essential for tour
- Open to walk in's for shopping and for buying fresh oysters
- Parking onsite
- Local transfers from the Hawkesbury River Train Station available
- Accessible-friendly

**WHAT TO BRING**

Sun, wind and rain protection. While we do have a canopy on our Farm Cruise vessel, the sides are open to the elements including sea spray. Water bottle and camera also recommended

**GROUP CAPACITY**

- Min 2 pax
- We can cater for all size groups

**PRODUCT INFORMATION**

- Duration from 30mins to 2.5hrs
- Multiple sessions available in the day

**CONTACT**

Telephone: 61 488 361 042  
 Email: hello@brokenbaypearlfarm.com.au  
 Website: brokenbaypearlfarm.com.au



### 69 Cooks Road Glenworth Valley NSW 2250

#### OVERVIEW

Glenworth Valley spans 3,000 acres of pristine Australian bushland and offers a range of exciting adventure experiences including horse riding, ATV quad biking, abseiling, kayaking and much more. Located just off the M1 only 1 hour from Newcastle on the NSW Central Coast

#### ENTRY, PASS OR TOUR INCLUSIONS

- Safety equipment & briefing
- Experienced, friendly guides
- Risk assessment documentation
- Insurance coverage
- Coach parking
- Picnic and restroom facilities

#### IMPORTANT INFORMATION

- Open daily 9am - 5pm
- Closed Christmas and New Years Day
- Pre-booking essential for all tours
- Flexible scheduling to suit itineraries
- On-site event centre with catering available
- Australian wildlife and Aboriginal cultural experiences
- On site camping, glamping and eco-villa accommodation

#### WHAT TO BRING

Enclosed footwear, hat, sunscreen, water bottle

#### PRODUCT INFORMATION

- Horse riding
- ATV quad biking
- Kayaking
- Abseiling
- Laser skirmish
- Axe throwing
- Team building activities

#### GROUP CAPACITY

- Tours and catering available for small or large groups from 4 - 1000+ pax
- Tailored itineraries and menus to suit
- Custom packages and group rates available on request

#### CONTACT

Telephone: 61 2 4375 0107  
Email: [madeline@glenworth.com.au](mailto:madeline@glenworth.com.au) or [nathan@glenworth.com.au](mailto:nathan@glenworth.com.au)  
Website: [glenworth.com.au](http://glenworth.com.au)

### 33 Dunks Lane Jilliby NSW 2259

#### OVERVIEW

Meet, feed, and connect with over 150 alpacas and llamas along with baby doll sheep at Iris Lodge Alpacas in the NSW Hunter Region. Choose from two unique experiences — the relaxed Brunch with Alpacas or the interactive Alpaca Meet & Greet

#### ENTRY, PASS OR TOUR INCLUSIONS

- Brunch with Alpacas: Guided farm tour, animal feeding including alpacas, llamas and babydoll sheep, and a full country-style brunch using local produce
- Alpaca Meet & Greet: Interactive farm experience with alpacas, llamas, and other friendly farm animals

#### IMPORTANT INFORMATION

- Advance bookings required
- Suitable for all ages and abilities
- Accessible pathways, parking, and rest areas
- Free on-site parking provided

#### PRODUCT INFORMATION

- Brunch with Alpacas – duration 2 – 2.5 hours
- Alpaca Meet & Greet – duration approx 1 hour
- See website for session times
- 2025 Business NSW State award winner for Excellence in Sustainable Tourism

#### WHAT TO BRING

Comfortable outdoor clothing, enclosed shoes, hat, sunscreen, and a camera. All alpaca feed is provided

#### GROUP CAPACITY

- Brunch with Alpacas: up to 40 guests per session
- Alpaca Meet & Greet: up to 150 guests per session

#### CONTACT

Telephone: 61 467 950 470  
Email: [irislodgealpacas@gmail.com](mailto:irislodgealpacas@gmail.com)  
Website: [irislodgealpacas.com](http://irislodgealpacas.com)



**Departs from Bouddi National Park NSW 2250**

**OVERVIEW**

At Elixir Journeys, we host private and small-group nature escapes that engage the senses and restore the spirit. Our Bouddi National Park experiences pair soft adventure with barefoot luxury - think wild coastal walks, sunset picnics, and hyper-local flavours shared in beautiful places

**PRIVATE AND SMALL GROUP EXPERIENCES**

- Private bushwalks on demand (1.5 – 2.5 hours)
- X Marks the Spot Secret Picnic (2 hours)
- 3-night small group Hawkesbury River Mouth Walk

**WHAT TO BRING**

- Hiking shoes
- Water
- Sunscreen and hat
- Camera

**PRODUCT INFORMATION**

- Walks are generally rated as moderate as they follow uneven bush trails with rocks and roots underneath
- A reasonable level of fitness is required

**GROUP CAPACITY**

- Min: 1 guest | Max: 12 guests

**IMPORTANT INFORMATION**

- Advance bookings required
- Visit website for departure dates

**CONTACT**  
Telephone: 61 422 273 464  
Email: hello@elixirjourneys.com  
Website: elixirjourneys.com

**192 Wattle Tree Road Holgate NSW 2250**

**OVERVIEW**

Discover a place where nature, flavour come together to make award-winning wine. Firescreek Botanical Winery is a stunning escape on the NSW Central Coast, where wines are handcrafted from a vibrant palette of fruits, flowers, and fragrant botanicals—many organically grown on the 2.5-acre property

**ENTRY, PASS OR TOUR INCLUSIONS**

Enjoy wine tasting at the cellar door, or stay a little longer and book in for either:

- Chocolate & Wine Pairing with decadent artisan chocolates
- Foraging & Mixology hand-picking your garnishes and making mimosas
- Aboriginal Storytelling & Wine Tasting Tour - Culture & Connection
- Winemaker's Secret Garden Tour: For the behind-the-scenes enthusiasts

**WHAT TO BRING**

Bring your taste buds and sense of adventure! If you've booked an experience, specific details on what to bring will be included in your booking information.

**IMPORTANT INFORMATION**

- Open Wednesday to Sunday 10:30 am - 4:30 pm.
- See website for experience scheduling
- Closed Christmas Day, Boxing Day and New Year's Day

**PRODUCT INFORMATION**

- Adventures for curious foodies: tastings, tours & unique experiences
- 2025 Business NSW Central Coast Visitor Economy Award winner for "Outstanding Beverage Experiences"
- 15 mins from Terrigal Beach, 1 hr from Newcastle Airport
- Wander 2.5 acres of lush gardens & enjoy wines inspired by regenerative farming

**GROUP CAPACITY**

- Cellar Door: walk-ins welcome for groups under 10
- Experiences: bookable for singles to up to 65 guests, depending on the experience

**CONTACT**  
Telephone: 61 2 4365 0768  
Email: info@firescreek.com.au  
Website: firescreek.com.au



**1 Red Hill Road Wyong Creek NSW 2259**

**OVERVIEW**

Treetops Adventure Central Coast offers unforgettable outdoor fun for families, couples and visitors. Climb, zip and bounce among the trees just 90 minutes north from Sydney CBD. For ages 3 - 75 yrs+

**ENTRY, PASS OR TOUR INCLUSIONS**

Choose from three adventures, or save with two or more activities:

- Zipcoaster (1 hour) Adult \$42, Child \$36
- High Ropes (2.5 hours) Adult \$69, Child \$59, Junior \$38
- Networld (2 hours) \$28pp

**IMPORTANT INFORMATION**

- Open 7 days, 9am - 5pm
- Closed Christmas Day
- Bookings recommended
- Waiver form required
- Onsite parking and kiosk available

**WHAT TO BRING**

- Sturdy enclosed footwear is required
- Comfy clothes recommended
- Water, sunscreen and insect repellent
- Pack a light rain jacket for wet weather

**PRODUCT INFORMATION**

- Training provided, then explore the treetops at your own pace
- Allow 3 - 4 hours for your visit

**GROUP CAPACITY**

- No minimums
- Up to 400 guests daily.
- Large groups will be split

**CONTACT**

Telephone: 61 4307 4905  
 Email: [centralcoast@treetopsadventure.com.au](mailto:centralcoast@treetopsadventure.com.au)  
 Website: [treetopsadventure.com.au](http://treetopsadventure.com.au)

**1 Darkinjung Road Calga NSW 2100**

**OVERVIEW**

Heritage Listed animal sanctuary. Meet Australia's weird and wonderful wildlife. Hang out with free-roaming kangaroos. Visit wombats, koalas, Tasmanian devils, cockatoos, reptiles. Animals are rescues or in rewilding programs. Step into their world

**ENTRY, PASS OR TOUR INCLUSIONS**

- Includes entry and ranger-talks
- Visit the animals or explore the bush-tracks and Aboriginal sites or both
- Includes boomerang throwing and kangaroo and emu roundup (check times)
- Pricing from \$40 per adult, \$30 per child

**IMPORTANT INFORMATION**

- Open every day 9:30 am-5 pm
- Early closing Christmas Day 3pm
- Kiosk on site, or bring a picnic
- Free parking

**WHAT TO BRING**

- Comfortable shoes
- Hat and sunscreen
- Water bottle
- Camera
- Light rain jacket recommended in wet weather

**PRODUCT INFORMATION**

- Self-guided (no booking required)
- Ranger-guided (booking essential)
- Option to add Private Ranger or animal 'speed dates'
- Night tours available
- Cabin accommodation available

**GROUP CAPACITY**

- Individuals welcome.
- Max 120 per private group
- Larger groups split with multiple ranger-guides

**CONTACT**

Telephone: 61 2 4375 1100  
 Email: [info@walkaboutpark.com.au](mailto:info@walkaboutpark.com.au)  
 Website: [walkaboutpark.com.au](http://walkaboutpark.com.au)



**Pick up location: Kangaroo Point Boat Ramp, 142 Pacific Hwy Brooklyn NSW 2083**

**OVERVIEW**

Family-owned for over 20 years, our oyster farm offers immersive boat tours, hands-on oyster shucking, and unforgettable in-water dining. Meet multi-generation farmers and taste Broken Bay Oysters straight from the source

**ENTRY, PASS OR TOUR INCLUSIONS**

- Boat ride to oysters leases
- Guided oyster farm tour
- Learn to open oysters
- Enjoy 18 fresh oysters per person
- Prawns
- In-water oyster tasting with refreshments
- Waders to wear on the day
- BYO alcoholic beverages welcomed

**IMPORTANT INFORMATION**

- No walk-ins permitted – all experiences must be pre-booked
- Customer Service: Available daily from 9:00am – 5:00pm
- Parking: untimed street parking is available on the road leading down to the wharf

**GROUP CAPACITY**

We can easily cater for groups of up to 120 at a time, for larger groups please reach out about bigger boat options

**WHAT TO BRING**

As conditions on the water can be windy, we recommend bringing a waterproof wind jacket. An umbrella can also be useful for both sun protection and unexpected rain. Please also bring a hat, sunglasses, sturdy non-slip shoes, sunscreen, and drinking water to ensure your comfort throughout the experience. For the Immerse Yourself Tour - We recommend wearing socks and long pants, as they make wearing waders more comfortable. You're also welcome to bring your own alcohol if you have something special you'd like to enjoy

**CONTACT**

Telephone: 61 416 888 801

Email: [info@sydneyoystertours.com](mailto:info@sydneyoystertours.com)

Website: [sydneyoystertours.com](http://sydneyoystertours.com)

**VOCO**

BY IHG

Gosford



**108 Donnison Street Gosford NSW 2250**

**OVERVIEW**

voco Gosford, by IHG, sits above Brisbane Water just an hour from Sydney. Stylish rooms, rooftop bar, pool, dining, and flexible event spaces make it the ideal base to relax, explore, and enjoy the Central Coast

**PROPERTY FACILITIES**

Stay at voco Gosford with 130 rooms, 6 dining venues, rooftop bar, podium pool, and versatile event spaces, perfect for leisure stays, culinary experiences, or hosting meetings, conferences, weddings, and celebrations

**IMPORTANT INFORMATION**

- Check-in from 3 pm, check-out by 11 am
- Dining venues may vary hours.
- Free Wi-Fi available
- Function spaces available for meetings, conferences, weddings, and special events

**EXTRAS**

- Rooftop bar
- Pool
- Versatile event spaces suitable for weddings, meetings or celebrations

**WHAT TO BRING**

Pack swimwear for the pool, comfy shoes for exploring beaches and walks, and an appetite for our 6 dining venues. Bring your sense of adventure and relaxation for a full Central Coast experience

**ROOM TYPES**

- 130 stylish guest rooms designed for comfort and easy escapes
- A mix of Standard Rooms, Premium Rooms and Suites
- Take your pick of city skyline or bay views

**CONTACT**

Telephone: 61 2 4327 0700

Email: [stay@vocogosford.com.au](mailto:stay@vocogosford.com.au)

Website: <https://www.ihg.com/voco/hotels/us/en/gosford/gosgf/hoteldetail>



**Highview Road Pretty Beach NSW 2257**

**OVERVIEW**

Pretty Beach House is one of Australia's most exclusive luxury lodges. The lodge sits on the spectacular NSW Bouddi Peninsula, high on the escarpment above Pretty Beach and nestled into Bouddi National Park, a paradise of rugged bushland, unspoiled beaches & pristine bays

**PROPERTY FACILITIES**

With world-class hospitality, highly personalised service, modern eco-sensitive architecture, the overall sensibility is one of generous & effortless hospitality, of easy, relaxed luxury and of unwavering attention to detail. Quintessential Australian luxury

**STAY INCLUSIONS**

- All dining, starting with lunch on arrival day
- All snacks, including morning tea and afternoon tea
- Non-alcoholic beverages, including tea & coffee
- A considered selection of fine wines, cocktails & beers are also included as part of the generous hospitality

**IMPORTANT INFORMATION**

- 2-night minimum stay
- 4 luxurious pavilions, lounge, bar & guest-only day spa
- All pavilions sleep 2 guests only
- Gated residence

**WHAT TO BRING**

- Swimmers
- Relaxed, comfortable clothing
- Walking or Hiking Shoes

**ROOM TYPES**

- The Retreat - two-story pavilion
- Treetops - penthouse pavilion
- Hideaway - detached pavilion
- Bayview - detached pavilion

**CONTACT**

Telephone: 61 2 4349 7000  
Email: [stay@prettybeachhouse.com](mailto:stay@prettybeachhouse.com)  
Website: [prettybeachhouse.com](http://prettybeachhouse.com)



**107 The Scenic Road Killcare Heights NSW 2257**

**OVERVIEW**

A world-class boutique hotel located just north of Sydney, Bells at Killcare Boutique Hotel, Restaurant & Spa is one of Australia's most distinctive retreats, perfect for a romantic getaway, a nature immersion, or a quick city escape. A seamless blend of boutique hospitality, elegance and nature

**PROPERTY FACILITIES**

- Bells Bakery & Larder, open daily
- Multi award winning restaurant
- Garden Bar
- Bells Day Spa
- 25m magnesium lap pool
- Bells Farm and vegetable gardens

**IMPORTANT INFORMATION:**

- 2-night minimum stay on weekends & in peak periods
- Reception is open 8am until 8pm daily
- Free parking, Free Wi-Fi
- Restaurant is wheelchair accessible, along with one guest cottage

**WHAT TO BRING**

- Swimmers, beach attire
- Relaxed, comfortable clothing
- Walking or hiking shoes

**ROOM TYPES**

- 25 boutique cottages, some suitable for families
- 4 luxurious lodges with ocean views and heated pool, suitable for families

**CONTACT**

Telephone: 61 2 4349 7000  
Email: [reservations@bellsatkillcare.com.au](mailto:reservations@bellsatkillcare.com.au)  
Website: [bellsatkillcare.com.au](http://bellsatkillcare.com.au)



**40 Bush Street Norah Head NSW 2263**

**OVERVIEW**

Looking for sun, surf and nature in one spot? Norah Head has it all. Stay in the stunning heritage-listed Lighthouse Keepers Cottages, just an hour from Sydney. Enjoy ocean views, coastal walks and a unique historic getaway that's truly bucket-list-worthy. Perfect location for weddings and events

**PROPERTY FACILITIES**

Waterfront location with a kiosk. Enjoy daily Norah Head Lighthouse tours (10am-2pm, weather permitting). From May-Nov, spot migrating humpbacks. Explore the 2.5km Norah Head Lighthouse Loop Walk, a Grade 4 trail taking around 1 hour

**IMPORTANT INFORMATION**

- Tours run daily by volunteers 10am-1.30pm all year
- Check-in 3pm | check-out 10am
- Early/late check-in subject to availability and fees.
- Reception: 9am-5pm
- For late arrivals, contact us for easy after-hours access
- Static rates for contracted Inbound FIT/Groups; dynamic rates via connected Trade partners

**EXTRAS**

- Free Wi-Fi & Parking
- Ideal location for markets, festivals, expos and outdoor classes
- Epic location for a wedding on the Norah Head Lighthouse Wedding Lawn with this iconic lighthouse as your backdrop

**WHAT TO BRING**

Bring your favourite food and drinks for a great stay. Local shops are just a 10-minute drive from Norah Head Lighthouse. All linen, towels, basic bathroom amenities, and tea, coffee and sugar are provided so you can enjoy a cuppa on arrival

**ROOM TYPES**

- 3 spacious bedrooms sleeping 9 guests. One room includes a king and king single, while the other two rooms contain queen and king single in each room
- 2 x Assistant Lighthouse Keepers Quarters with breathtaking ocean views
- 1 x Head Lighthouse Keepers Quarters with breathtaking ocean views

**CONTACT**

Telephone: 61 2 4086 5503  
Email: [norahheadlighthouse@reflectionsoliday.com.au](mailto:norahheadlighthouse@reflectionsoliday.com.au)  
Website: [reflectionsolidays.com.au/unique-stays/norah-head-lighthouse](http://reflectionsolidays.com.au/unique-stays/norah-head-lighthouse)



**Pinetree Lane Terrigal NSW 2260**

**OVERVIEW**

Crowne Plaza Terrigal Pacific is a beachfront escape on the NSW Central Coast, offering sweeping ocean views, beachfront dining, coastal walks, vibrant bars and relaxed resort amenities. Wake to the waves, explore the coastline and enjoy effortless days by the ocean, whatever the season

**PROPERTY FACILITIES**

Unwind in spacious rooms and suites with private balconies and sweeping ocean views. Enjoy the outdoor heated pool year-round, day spa, fitness club and exceptional onsite dining. Dine at Chef's Hat-awarded Meribella, indulge in elegant high tea, or relax beachside with live entertainment at Terrigal Beach House

**IMPORTANT INFORMATION**

- Check-in from 3pm; check-out is 11am
- 24 hour reception
- Onsite parking and valet available (fees apply)
- Dining and spa reservations recommended
- Outdoor heated pool

**EXTRAS**

- Premier beachfront positioning in Terrigal
- Late check-out or early check-in (subject to availability)
- Celebration enhancements for birthdays, anniversaries and proposals
- Day spa treatments and wellness experiences

**WHAT TO BRING**

- Comfortable coastal wear and layers for day-to-night dining
- Swimwear for the heated pool and beach dips
- Walking shoes for coastal trails and village exploring
- A light jacket or knit for sea breezes
- Your appetite for great food, drinks and slow seaside days

**ROOM TYPES**

- All rooms and suites feature private balconies or terraces
- King and Twin (queen, queen bed) configurations
- Premium Pool and Ocean View rooms
- Club rooms and Suites feature exclusive inclusions, premium amenities and dedicated VIP services support

**CONTACT**

Telephone: 61 2 4384 9111  
Email: [reservations.terrigal@ihg.com](mailto:reservations.terrigal@ihg.com)  
Website: [terrigalpacific.crowneplaza.com](http://terrigalpacific.crowneplaza.com)



**53-54 The Esplanade Ettalong Beach NSW 2257**

**OVERVIEW**

Opposite the beach, Mantra Ettalong Beach is the premier Central Coast choice. In the charming seaside town of Ettalong, we offer spectacular ocean views and a relaxing atmosphere—perfect for families, couples, or business travelers

**PROPERTY FACILITIES**

Just 90 minutes from Sydney, Mantra Ettalong Beach offers fully self-contained, non-serviced apartments with an outdoor pool – ideal for a weekend away or a longer stay. We are 8 minutes drive from Woy Woy Station and 5 minutes from Ettalong Wharf

**WHAT TO BRING**

All of our suites are fully furnished with kitchenettes, laundry facilities, shower over spa baths, and Foxtel. We provide linen and towels—just bring your personal items for a relaxing stay

**IMPORTANT INFORMATION**

- Reception is open 7.00am – 10.00pm
- Check-in from 2.00pm | Check-out by 10.00am
- Cashless property
- ALL/Accor Plus Memberships accepted
- Complimentary parking | Subject to availability
- Accessible rooms available | Bookings essential

**ROOM TYPES**

- Studios, 1, 2 & 3 bedroom units
- Walk-in showers in select rooms
- Self-contained | Non-serviced
- Sofa beds additional

**EXTRAS**

- 4 stars
- Free wi-fi
- Eco certified
- Outdoor pool
- No pets allowed

**CONTACT**

Telephone: 61 2 4344 8888  
 Email: [ettalong.res@mantra.com.au](mailto:ettalong.res@mantra.com.au)  
 Website: [All.accor.com/hotel/B3L9/index.en.shtml](http://All.accor.com/hotel/B3L9/index.en.shtml)



**107 The Scenic Road Killcare Heights NSW 2257**

**OVERVIEW**

Experience the Central Coast lifestyle in style at Encore by Mingara. Guests can enjoy nearby beaches and attractions, discount at on-site bars and restaurants, and complimentary access to state-of-the-art fitness and aquatic facilities. Encore by Mingara - the perfect place to stay and play

**PROPERTY FACILITIES**

Encore by Mingara is conveniently located in Tumbi Umbi, part of the Central Coast's iconic lifestyle and entertainment precinct, Mingara Recreation Club. Just minutes from the M1 Motorway, Tuggerah Train Station, stunning shoreline and local attractions

**WHAT TO BRING**

We provide premium, eco-friendly Appelles bathroom amenities, a hair-dryer and ironing appliances, USB outlets, a mini-fridge and a safe. Just don't forget your toothbrush and chargers!

**IMPORTANT INFORMATION:**

- Reception open daily
- Accessible entry and elevators
- Free parking onsite
- Guest membership Included

**ROOM TYPES**

- 70 Duet Classic (+4 Accessible)
- 3 Duet Deluxe (+1 Accessible)
- 4 Harmony Suites
- 4 Bravo Suites

**EXTRAS**

- 4-Star Hotel
- Opened in 2025
- Booking.com Traveller Review Award Winner
- Club and Fitness Guest Memberships included

**CONTACT**

Telephone: 61 2 4237 1000  
 Email: [stay@encorebymingara.com.au](mailto:stay@encorebymingara.com.au)  
 Website: [encorebymingara.com.au](http://encorebymingara.com.au)







Newcastle is a compact and colourful city, rich in culture and steeped in heritage. It's a destination where everything is on your doorstep, from a spectacular coastline to vibrant restaurants; boutique shopping to city markets; and nature.

Newcastle offers an extraordinary culinary scene and thriving arts culture. Visit local craft breweries and distilleries, browse independent art galleries, taste delicious bites from quirky eateries, admire the city's ever-expanding collection of street art or seek out a hidden bar. Newcastle is also home to an abundance of historical sites and natural attractions, with stunning beaches, a conservation park and bush reserve, ensuring a new adventure is just around the corner.

Newcastle, NSW, is a vibrant and diverse destination that offers a unique blend of coastal charm, rich history, and cultural experiences.



Distance from Newcastle Airport: 26kms, 30 minute drive

Distance from Sydney: 160kms, 2 hours drive



## Food & Beverage

- Award-winning and hatted restaurants and cafés
- Local produce and diverse dining options
- Craft breweries, distilleries and small bars
- Waterfront, harbour and coastal dining



## Nature & Wildlife

- Blackbutt Nature Reserve with native wildlife
- Coastal parks and reserves
- Effortless access to wildlife & green spaces



## Coastal & Aquatic

- Surf beaches and coastal scenery
- Historic ocean baths and swimming areas
- Bathers Way coastal walk
- Harbour cruises and coastal sightseeing



## Arts & Culture

- Newcastle Art Gallery and Newcastle Museum
- Fort Scratchley Historic Site and ANZAC Memorial Walk
- Vibrant street art scene and laneways
- Independent galleries, artist-run spaces and creative studios

# COASTXP

newcastle



Departs from Newcastle Cruising Yacht Club Dock C 95 Hannell Street Wickham NSW 2293

## OVERVIEW

CoastXP is Newcastle's top-rated experience on Trip Advisor, a multi-award winning and sustainable tourism accredited operator offering unique adventure boat cruises and nature-based walking tours centred around coastal sightseeing, whale watching (May – Nov) and guided bushwalking

## TOUR INCLUSIONS

- Professional guide
- Drinking water
- Excellent knowledge and equipment
- Personable service
- Life jackets

## IMPORTANT INFORMATION

- Tours depart daily (subject to weather and sea conditions) except Christmas Day
- Additional tours are available during peak seasons, school holidays and weekends
- Tours ranging from 75 minutes to 2.5 hours
- Parking and light rail close to vessel departure points

## PRODUCT INFORMATION

- Custom built boats with unobstructed 360° views
- Discover local history and geology
- Aboriginal heritage & unique destination landmarks
- Tours often observe dolphins, seals and whales in season (May-November)

## WHAT TO BRING

- Warm, weather-appropriate clothing
- Sunscreen recommended on sunny and cloudy days
- Premium weatherproof jackets are available for use at no additional cost

## GROUP CAPACITY

- Atmos vessel seats 20 guests
- Hydro vessel seats 12 guests
- Public and private tours

## CONTACT

Telephone: 1300 852 682  
 Email: [hello@coastxp.com](mailto:hello@coastxp.com)  
 Website: [coastxp.com](http://coastxp.com)



Departs from corner Scott and Watt Streets Newcastle NSW 2300

## OVERVIEW

Take a Walk on the Dark Side. Follow the footsteps of the past on Newcastle's True Crime Tour. Enjoy a leisurely guided walk through the city's shadowy history as you uncover dark secrets, infamous characters, and stories that time tried to forget

## ENTRY, PASS OR TOUR INCLUSIONS

- Knowledgeable tour host
- 90-100 minutes of Newcastle True Crime
- \$34 per adult
- \$25 per child

## WHAT TO BRING

Comfortable shoes

## IMPORTANT INFORMATION

- Sessions run Fri, Sat, Sun 7:30pm
- Additional sessions during holiday seasons include Tue & Thu evenings @ 7:30pm

## GROUP CAPACITY

- Minimum 4
- Maximum 30

## PRODUCT INFORMATION

Guided Tour (90-100 mins) - Return to the Scenes of the Crimes

## CONTACT

Telephone: 61 483 917 750  
 Email: [info@darkstories.com.au](mailto:info@darkstories.com.au)  
 Website: [darkstories.com.au/newcastle-true-crime-tour/](http://darkstories.com.au/newcastle-true-crime-tour/)



### Departs from your Newcastle accommodation

#### OVERVIEW

Boutique local tour operator based in Newcastle, NSW offering small-group and private experiences across Newcastle, the Hunter Valley and Port Stephens. Authentic, story-driven tours showcasing local culture, food, wine, wildlife and coastal beauty

#### TOUR INCLUSIONS

- Guided tours led by local experts
- Transport in air-conditioned vehicles
- Bottled water
- Entry fees/ tastings
- Curated stops highlighting Newcastle, the Hunter Valley and Port Stephens' best food, wine, wildlife, culture and coastal scenery

#### IMPORTANT INFORMATION

- Eight bookable tours across Newcastle, the Hunter Valley and Port Stephens.
- Hotel pick-up and drop-off included on all full-day tours.
- Small groups, local guides and personalised experiences ensuring comfort, connection and authenticity throughout
- Multi-day tours inc Sydney departure and bespoke luxury private tours coming soon

#### TOUR TYPES

- Newcastle City Tour
- Hunter Valley Wine
- Port Stephens - Summer & Winter
- Animal Lovers
- Country Towns
- Food & Street Art

#### WHAT TO BRING

- Comfortable walking shoes and weather-appropriate clothing
- Hat and sunscreen
- Camera or phone for photos
- A sense of curiosity
- Refillable water bottles encouraged to reduce single-use waste

#### GROUP CAPACITY

- Public scheduled tours: 2-11 pax
- Private tours: 2 - 100 pax

#### CONTACT

Telephone: 61 432 044 160

Email: [info@newytourco.com.au](mailto:info@newytourco.com.au)

Website: [newytourco.com.au](http://newytourco.com.au)



### 13 Bryant Street Tighes Hill NSW 2297

#### OVERVIEW

Discover warm, hands-on seasonal cooking experiences at The Yellow Door Kitchen. Join chef-led classes, in baking, bread making, cheese making and French, Italian, Spanish or Thai cuisine. Most classes culminate with participants enjoying a shared meal their beautiful dining room in Tighes Hill

#### ENTRY, PASS OR TOUR INCLUSIONS

- Chef-led class and guided demonstrations
- All ingredients and equipment supplied
- Hands-on cooking and interactive learning
- Sit-down dining experience with the dishes you create
- Complimentary glass of wine with dining classes

#### IMPORTANT INFORMATION

- Classes run weekly and on selected weekends
- Private events and corporate team building available 7 days
- Sessions run 1.5-3 hours depending on class
- Suitable for beginners to experienced cooks
- Plenty of untimed parking close by and nearby public transport



#### WHAT TO BRING

- Comfortable closed shoes
- Aprons provided
- BYO wine optional for private bookings

#### GROUP CAPACITY

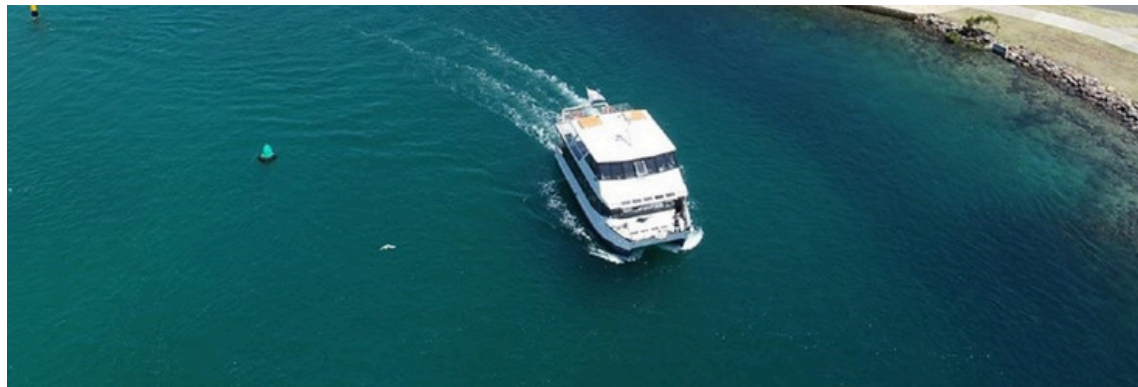
- Minimum 4 guests
- Maximum 20 guests
- Larger groups available with split-session format

#### CONTACT

Telephone: 61 405 516 809

Email: [info@theyellowdoorkitchen.com](mailto:info@theyellowdoorkitchen.com)

Website: [theyellowdoorkitchen.com.au](http://theyellowdoorkitchen.com.au)



## 41 Darling Street Carrington NSW 2294

### OVERVIEW

Discover immersive experiences at Earp Distilling Co. From relaxed self-guided tastings to hands-on blending, premium dining add-ons, intimate date nights, and full distillation sessions

### EXPERIENCE OFFERINGS

- Taste & Graze: Self-guided tasting flight with grazing
- Blending Class: Craft a personalised spirit
- Blend & Dine: Optional dining upgrade for Blending Class
- Blending Date Night: Collaborative blend for two with shared meal
- Spirit School: Distil your own gin or rum from start to finish

### PRODUCT INFORMATION

- Taste & Graze: Gin, Sweet or Dark Flight options available
- Blending: 200ml gin, rum or vodka base spirits, 20 flavour extractions
- Blend & Dine: Blending and two course meal
- Date Night: Shared 500ml blending and three course meal
- Rum or Gin Spirit School: Take home a personalised 500ml ceramic bottle

### WHAT TO BRING

- Closed-toe shoes for Spirit School and tours
- ID for tastings and blending sessions
- Curiosity and a taste for discovery

### IMPORTANT INFORMATION

- Bookable Wed-Sun
- Arrive 10 minutes early
- Advise dietary requirements at booking
- Guided by trained staff
- Non-alcoholic options available

### GROUP CAPACITY

- Taste & Graze: 2-50
- Blending: 1-50
- Blend & Dine: 1-50
- Spirit School: 2-14

### CONTACT

Telephone: 61 2 8317 5777  
 Email: [info@earpdistillingco.com](mailto:info@earpdistillingco.com)  
 Website: [earpdistillingco.com](http://earpdistillingco.com)

## Cruises depart Booragul Wharf (Lake Macquarie) and Honeysuckle Foreshore (Newcastle)

### OVERVIEW

Nova Cruises is a family-owned cruise operator based in Newcastle and Lake Macquarie offering stunning and diverse scenic harbour, Hunter river and Lake Macquarie cruises. Nova specialises in lunch and dinner cruises, boom net cruises in summer, whale watching, special events and private charters

### CRUISE INCLUSIONS

- Freshly made buffet lunch or dinner
- Informed commentary of the Newcastle Harbour, Hunter River and Lake Macquarie
- Complimentary tea and coffee
- Hospitable and friendly service staff
- Specialised pricing for adults, concession card holders and children
- Fully licenced bar with cash/card facilities

### IMPORTANT INFORMATION

- Office open 8am-5pm; closed public holidays
- Lunch and dinner cruises: 2.5-4hrs depending on the cruise
- Cruises to Morpeth or Raymond Terrace revolve around tides and the Hexham Bridge openings
- Boom net cruises available on Lake Macquarie during Christmas school holidays
- 2.5hr whale watching cruises: annually May-Oct
- Private charters available on all vessels for large groups, corporate team building, functions and more

### WHAT TO BRING

- Hat and sunscreen (sunscreen is also provided onboard)
- Camera to snap pictures of playful whales, the stunning scenery of Lake Macquarie, beautiful wetlands/rural areas of the Hunter River and the inner workings of the Newcastle Harbour

### GROUP CAPACITY

- Princess (Newcastle Harbour) seats 100 pax for a plated lunch/dinner or up to 150 for canapes
- Lady Mac (Lake Macquarie) up to 70 pax for a cocktail event
- Bay Connections (Hunter River and whale watching) up to 40 pax

### CONTACT

Telephone: 61 2 4088 8800  
 Email: [info@novacruises.com.au](mailto:info@novacruises.com.au)  
 Website: [novacruises.com.au](http://novacruises.com.au)



**Lessons run from Nobbys Beach Newcastle East NSW 2300**

**OVERVIEW**

Learn to surf on Newcastle's iconic coastline at Nobbys Beach! Surf lessons with Surfest Surf School are fun, safe and easy. Join a group lesson, enjoy a one-on-one private lesson, or bring family and friends for a private group session - perfect for beginners and intermediates

**INCLUSIONS**

All equipment and expert instruction provided - surfboards, wetsuits, rash shirts, leg ropes, and sunblock included

**IMPORTANT INFORMATION**

Lessons run in rain or shine. If surf conditions are unsafe, lessons will be rescheduled. Group lessons require a minimum of two participants. Group lessons are for ages 13yrs+ and private lessons are for ages 5 and over. Shallow water swimming ability is required

**PRODUCT INFORMATION**

All lessons run for 80 minutes, most days between 8am - 12:30pm. Contact us if the time or date you prefer is not available on our website

**WHAT TO BRING**

Swimmers, towel and drinking water

**GROUP CAPACITY**

Flexible group sizes available

**CONTACT**  
 Telephone: 61 410 840 155  
 Email: surfestsurfschool@gmail.com  
 Website: surfestsurfschool.com.au

**Crystalbrook**

Kingsley

Newcastle



**282 King Street Newcastle NSW 2300**

**OVERVIEW**

Discover Newcastle from new heights at Crystalbrook Kingsley, a sustainably led, design-driven luxury hotel with a rooftop bar and restaurant boasting panoramic harbour views

**HOTEL FEATURES**

- Rooftop restaurant – Roundhouse
- Rooftop bar – Romberg's
- Group floor café & lounge – Ms Mary
- 24 hour reception
- In-room dining
- Secure parking
- Accessible rooms available

**EXTRAS**

- 5-Star rating
- Free, unlimited wifi
- Winner of the Paul Davis Award for the Australasia-Pacific Hotel of the Year and Hotel of the Year (Conversion)
- EarthCheck silver level certification for sustainability



**ROOM TYPES AND FACILITIES**

- 130 luxury rooms and suites
- Rooftop restaurant and cocktail bar
- Lobby bar and café
- Meeting rooms
- Group bookings welcome
- Twin and family rooms available

**IMPORTANT INFORMATION**

- Check in 3pm | Check out 11am
- 25 minutes from Newcastle Airport

**CONTACT**  
 Telephone: 61 2 4928 8600  
 Email: kingsley@crystalbrookcollection.com  
 Website: crystalbrookcollection.com/kingsley



**575 Hunter Street Newcastle NSW 2300**

**OVERVIEW**

Located in the heart of Newcastle's CBD, Quest Newcastle, which has been refurbished with a modern coastal décor, is a short walk to restaurants, theatres, and shopping precincts. Offering one, two and three bedroom apartments, with pet friendly and accessible rooms. Everything is at your doorstep at Quest Newcastle

**HOTEL FEATURES**

- 64 apartments: 1, 2 and 3 bedrooms
- Balcony and air conditioning
- On-site parking (subject to availability)
- Indoor swimming pool, hot tub, & gym room
- Onsite café & bar
- Pet friendly accommodation (subject to application)
- Accessible Rooms

**IMPORTANT INFORMATION**

- Reception open 7am – 9pm daily
- 24 hour onsite manager
- Across from Honeysuckle Light Rail

**EXTRAS**

- 4-Star rating
- Free, unlimited wifi
- Local team with tips on Newcastle's must-see spots and hidden gems
- Charge-back service for local restaurants



**WHAT TO BRING**

Only essentials as we've got the rest! Whether you're travelling solo, with family or with your pet, we're your home away from home

**ROOM TYPES**

- One, Two & Three Bedroom Apartments with full kitchen & in room laundry
- One Bedroom Accessible Apartments available

**CONTACT**

Telephone: 61 2 4928 8000  
Email: [questnewcastle@questapartments.com.au](mailto:questnewcastle@questapartments.com.au)  
Group enquiries:  
[groups.newcastle@questapartments.com.au](mailto:groups.newcastle@questapartments.com.au)  
Website: [questnewcastle.com.au](http://questnewcastle.com.au)



**787 Hunter Street Newcastle West NSW 2302**

**OVERVIEW**

Quest Newcastle West, located in the historic 1876 Woods Castlemaine Brewery, offers studio, one and two bedroom apartments. Guests can walk to cafes, bars and restaurants at nearby Honeysuckle, Markettown shopping centre or hop on the light rail at the Newcastle Interchange, located directly across the road, to explore further afield

**HOTEL FEATURES**

- 77 rooms: studio and 1 & 2 bedrooms
- Air conditioning throughout
- On-site parking (subject to availability)
- Gym, business lounge & conference room
- Accredited accessible rooms
- Guest BBQ areas
- Complimentary guest laundry

**IMPORTANT INFORMATION**

- Reception open 7am - 9pm daily
- 24 hour onsite manager
- Minutes from Newcastle Interchange

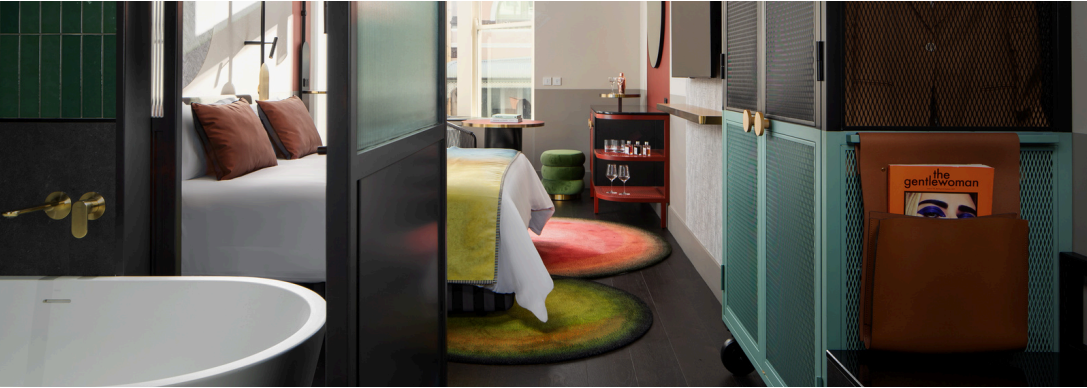
**EXTRAS**

- 4-Star rating
- Free, unlimited wifi
- Local team with tips on Newcastle's must-see spots and hidden gems
- Charge-back service for local restaurants

**CONTACT**

Telephone: 61 2 4920 3400  
Email: [newcastlewest@questapartments.com.au](mailto:newcastlewest@questapartments.com.au)  
Group enquiries:  
[groups.newcastle@questnewcastlewest.com.au](mailto:groups.newcastle@questnewcastlewest.com.au)  
Website: [questnewcastlewest.com.au](http://questnewcastlewest.com.au)





**185 Hunter Street Newcastle NSW 2300**

**OVERVIEW**

Escape yesterday's gravity, and check into a new reflection. At QT Newcastle, familiar welcome dances with a spectrum of surprise, through spaces where history and possibility live boldly in every detail. Step into new rooms and find another phase of being, in a scene set for luxury intrigue

**HOTEL FEATURES**

- Signature Jana restaurant
- Rooftop bar
- Room service available 24 hours
- Valet & self-parking available
- Non smoking property
- Dog friendly stay packages available
- Wheelchair accessible
- Bus / coach drop-off point at hotel entry

**IMPORTANT INFORMATION**

- Reception open 24 hours
- Check in 3pm | check out 11am
- Personal ID and credit card required

**EXTRAS**

- 5-Star rating
- Free, unlimited wifi
- Dyson hair dryers
- Minibar @ Nespresso coffee machine
- Workspace
- Bathrobe
- 12 seat private dining room
- 66 seat restaurant

**WHAT TO BRING**

A fun loving attitude, your appetite and sunglasses for the rooftop bar

**ROOM TYPES**

- 104 rooms
- 8 room types

**CONTACT**

Telephone: 61 2 9396 4000  
 Email: [reservations\\_QTNewcastle.evt.com](mailto:reservations_QTNewcastle.evt.com)  
 Website: [qthotels.com/newcastle/](http://qthotels.com/newcastle/)



**Wharf Road and Merewether Street Newcastle NSW 2300**

**OVERVIEW**

Waterfront hotel on Newcastle Harbour offering spacious rooms, modern amenities, and dining at Wharf 350. Perfect base for exploring the Hunter Valley and Newcastle's beaches

**HOTEL FEATURES**

- Accommodation with free wi-fi
- Access to fitness centre and outdoor pool
- Outdoor and on site dining
- Flexible packages available for couples, families, and groups

**IMPORTANT INFORMATION**

- Check-in from 3 pm
- Check-out by 11 am
- Parking available on-site
- Seasonal dining hours apply at Wharf 350

**EXTRAS**

- 4-Star rating
- Free, unlimited wifi
- Harbour view rooms available
- Meeting spaces for up to 200 guests

**WHAT TO BRING**

Bring casual wear for dining, swimwear for the pool, and comfortable shoes for exploring Newcastle's foreshore, world-class beaches and nearby attractions!

**ROOM TYPES**

- Over 170 hotel suites available
- Harbour view rooms
- Suites
- Family room options
- Accessible rooms upon request

**CONTACT**

Telephone: 61 2 4907 5000  
 Email: [reservations\\_rydgesnewcastle@evt.com](mailto:reservations_rydgesnewcastle@evt.com)  
 Website: [rydges.com/newcastle](http://rydges.com/newcastle)

# NOVOTEL

newcastle



## 5 King Street Newcastle NSW 2300

### OVERVIEW

Discover Novotel Newcastle Beach, ideally positioned a moment's walk from Newcastle Beach one of Australia's most celebrated surf breaks. Our beachside hotel in Newcastle offers unparalleled access to the vibrant heart of the city, making it the perfect choice for your next Newcastle getaway

### HOTEL FEATURES

- 88 accommodation rooms
- Onsite restaurant and bar
- Terrace dining
- Room service
- Secure carparking
- Fitness centre – gym, spa, steam room

### IMPORTANT INFORMATION

- Check in from 2pm
- Check out 11am
- Paid parking on-site (subject to availability)

### EXTRAS

- 4 naturally lit function rooms
- Meeting spaces for up to 150 people
- Free WIFI
- 4 star rating

### WHAT TO BRING

Just your toothbrush! We have everything you need for a comfortable, hassle-free stay

### ROOM TYPES

- 88 studio style hotel rooms
- Walk in showers
- Superior king rooms
- Superior double rooms
- Harbourview king rooms
- Balcony king rooms
- Family rooms
- Accessible rooms

### CONTACT

Telephone: 61 2 4032 3700

Email: [reception@novotelnewcastle.com.au](mailto:reception@novotelnewcastle.com.au)

Website: [novotelnewcastlebeach.com.au](http://novotelnewcastlebeach.com.au)







Discover a charming region with a rich history, emerging food scene, and a thriving arts community.

Maitland effortlessly blends rich history with contemporary charm. As you stroll through its heritage-listed buildings and lush parks, you'll find the echoes of its colonial past harmonising with the vibrant arts and culinary scenes. Discover vibrant murals on city streets, see artists at work in their studios and pick up works from local creators.

Just a short drive from Maitland, you'll also find Morpeth, an historic riverside village that retains a charm reminiscent of yesteryears, with its cobblestone streets, heritage buildings, and serene landscapes. Morpeth is a journey back in time, where each antique shop, café, and gallery holds a piece of the past waiting to be discovered.



Distance from Newcastle: 35kms, 40 minute drive

Distance from Sydney: 175km, 2 hours drive

# key experiences



## Food & Beverage

- Boutique cellar door and restaurant experience
- Riverside cafes, restaurants and bars
- Sourdough making class



## Nature & Wildlife

- Stroll along the Hunter River
- Idyllic rural retreats
- Step inside a real beehive
- Hands-on farm experiences



## Heritage & Culture

- Explore Morpeth, a historic riverside village
- Self guided heritage walks
- Maitland Regional Art Gallery
- Vibrant events calendar



### 162 Swan Street Morpeth NSW 2321

#### OVERVIEW

The Candle Experience. A guided group experience in Morpeth, Hunter Valley NSW. Discover the links between personality, memories and sense of smell, plus a take-home goody bag for each person

#### ENTRY, PASS OR TOUR INCLUSIONS

The Candle experience includes a personal fragrance profile analysis, complimentary beverages and a goody bag containing UAINE's candles that have been hand-picked to suit your personality

#### IMPORTANT INFORMATION

Candle Experiences are 1.5hrs in duration and run Monday, Tuesday, Wednesday, Thursday and Sunday at 11:00 am, 1:30 pm and 4:00 pm. On-street parking is available in front of the studio. Bathroom facilities are available on site. Experiences do not run on public holidays

#### PRODUCT INFORMATION

A guided experience of fragrance discovery. Like a wine tasting for your nose. Locally inspired fragrances to remember your trip to the Hunter Valley

#### WHAT TO BRING

Weather-appropriate clothing, a curious mind and a sense of smell!

#### GROUP CAPACITY

- Private Groups of 4 to 10 people
- Larger group capacity available upon request

#### CONTACT

Telephone: 61 2 4934 4935

Email: [info@uainecandles.com](mailto:info@uainecandles.com)

Website: [uainecandles.com/experiences](http://uainecandles.com/experiences)

### 148 Swan Street Morpeth NSW 2321

#### OVERVIEW

Welcome to the William Arnott Boutique accommodation, a unique place to stay in the heart of Morpeth and the home of the Historic Arnott Bakehouse. Our charming heritage building dates back to the early colonial days and offers guests a glimpse into the rich history of the local Morpeth township

#### PROPERTY FEATURES

- Historic Grandeur: Original 1850s architecture featuring high ceilings, cedar joinery, and sandstone details
- Boutique Suites: Luxuriously appointed rooms with premium linens and heritage-inspired styling
- Modern Essentials: High-speed wi-fi, smart TV, and reverse-cycle air conditioning for year-round comfort
- Prime Location: Steps away from Morpeth's famous boutique shopping, and riverside walks
- Thoughtful Extras: Artisan toiletries, plush towels, and a curated selection of amenities

#### ROOM TYPES

- Family Assorted - whole house sleeps 9
- Monte Carlo Suite - top floor penthouse, 2 king bedrooms, sleeps 4
- VoVo Sweet - family room queen bed plus bunk bed, sleeps 4
- SAO Studio - single room sleeps 1

#### WHAT TO BRING

Comfortable shoes

#### IMPORTANT INFORMATION

- Arrival & Sanctuary - check-in is available from 2:00 PM, with check-out by 10:00 AM (late departure subject to availability)
- Preserving Our History - to protect our original timber and masonry, the property is strictly non-smoking and we are unable to accommodate pets within the residence.
- Location & Accessibility - we are located at the heart of Morpeth's historic precinct. While we offer convenient nearby parking, please note that due to the authentic colonial architecture, some areas of the property may involve original staircases which may be a consideration for guests with limited mobility

#### CONTACT

Telephone: 61 2 4934 4148

Email: [info@historicarnottbakehouse.com.au](mailto:info@historicarnottbakehouse.com.au)

Website: [historicarnottbakehouse.com.au](http://historicarnottbakehouse.com.au)



**148 Swan Street Morpeth NSW 2321 - behind William Arnott Bakehouse**

**OVERVIEW**

Don't miss this opportunity to learn the secrets of sourdough bread making in a fun and interactive setting. Whether you're a beginner or have some baking experience, our class is designed to enhance your skills and deepen your understanding of the sourdough process

**ENTRY, PASS OR TOUR INCLUSIONS**

- Lunch
- Arnott's sourdough culture
- MSM apron
- Gift
- Class notes

**WHAT TO BRING**

As the bakehouse is cool, please bring a jacket and a water bottle

**IMPORTANT INFORMATION**

- Classes every Saturday
- 10.00am - 2.00pm
- Lunch provided at 12.30pm
- Located at the Historic Arnott Bakehouse
- Gift vouchers for the class are available from our online shop

**GROUP CAPACITY**

- 6 per group, to allow for a more personalised experience
- private groups can be arranged

**CONTACT**

Telephone: 61 418 400 112  
 Email: [info@historiccarnottbakehouse.com.au](mailto:info@historiccarnottbakehouse.com.au)  
 Website: [historiccarnottbakehouse.com.au](http://historiccarnottbakehouse.com.au)



**325 Pywell Road Luskintyre NSW 2321**

**OVERVIEW**

At Tranquil Vale, our wine tastings go beyond just giving you a taste of our award winning wines. You can take a seat and enjoy the surroundings whilst being served by one of our winemakers or take our winery tour for a more holistic and interactive wine experience

**ENTRY, PASS OR TOUR INCLUSIONS**

- Wine tastings | trying 8 wines with an expert, homemade bread and olive oils
- Winery Tours | a behind the scenes look at the winemaking process, barrel tasting (subject to availability), trying 8 wines with an expert, homemade bread and olive oils
- Group capacity = 20 pax

**WHAT TO BRING**

Comfortable shoes

**PRODUCT INFORMATION**

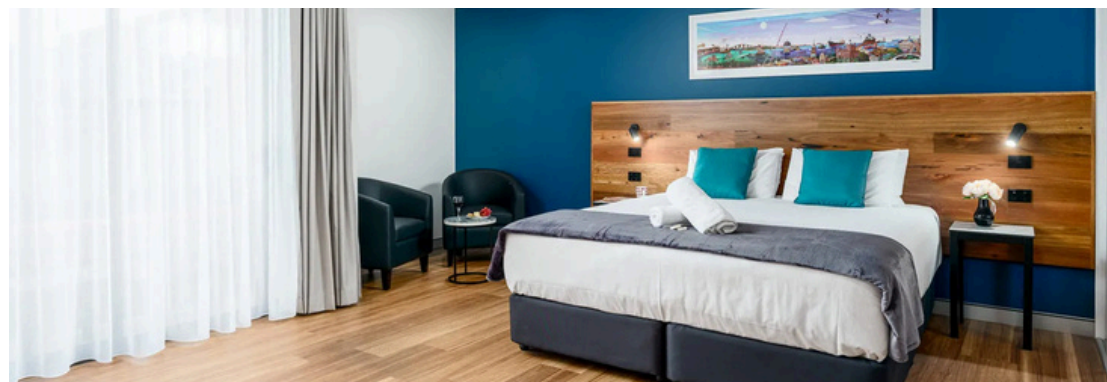
We sell estate grown wines and infused olive oils. Duration of wine experiences is 1-1.5 hours

**IMPORTANT INFORMATION**

Wine tasting is for persons over 18 years old. Children may accompany adults during the tasting and tour at no extra cost. Minors must be always supervised by a responsible adult. Open 10am-5pm Friday-Sunday and weekdays by appointment. Bookings Essential for winery tours. Closed Christmas Day

**CONTACT**

Telephone: 61 2 4930 6100  
 Email: [stay@tranquilver.com.au](mailto:stay@tranquilver.com.au)  
 Website: [tranquilver.com.au](http://tranquilver.com.au)



### Various departure locations in Maitland NSW 2323

#### OVERVIEW

Step off the beaten path with bespoke walking tours through the Hunter Valley. Taste local wines, savour artisan food, and uncover Maitland and Morpeth's hidden stories—crafted for curious explorers seeking something truly unique

#### ENTRY, PASS OR TOUR INCLUSIONS

- Professional tour guide
- Excellent historical knowledge
- Personal service
- Beverages and/or food

#### IMPORTANT INFORMATION

- Bookings essential for walking tours
- Public and Private groups catered for
- Groups of 12+ by request
- Walking on flat, accessible paths
- Walking from 1 – 1.5km

#### PRODUCT INFORMATION

- Guided tours only
- Duration 2.5 – 3 hours

#### WHAT TO BRING

- Walk appropriate shoes
- Refillable drink bottle
- Sunscreen & hat in summer
- Rain jacket in inclement weather
- Your sense of discovery

#### GROUP CAPACITY

- Walking tours from 2 – 12 participants
- Public and private walking tours
- Groups of 12+ by request

#### CONTACT

Telephone: 61 429 304 030  
 Email: [umbrellaevents@bigpond.com](mailto:umbrellaevents@bigpond.com)  
 Website: [umbrellaevents.com.au](http://umbrellaevents.com.au)

### 9 Steam Street Maitland NSW 2323

#### OVERVIEW

Hunter Studios offers modern, stylish accommodation close to Maitland's transport, dining, and major attractions. An ideal base for visitors exploring the Hunter Valley and surrounding regions

#### HOTEL FEATURES

Studios with a king bed or two singles, featuring well-equipped kitchens, air conditioning, free unlimited wi-fi, Chromecast streaming, a complimentary laundry room, and free secure parking

#### IMPORTANT INFORMATION

- Easily accessible with lift access to all floors
- No stairs required
- Bookings essential - no walk-ins
- Secure access via keypad and pincode

#### EXTRAS

- 4-Star rating
- Free, unlimited wifi
- Cooking facilities
- Free laundry

#### WHAT TO BRING

All the essentials are provided including towels, linen, cookware, dishes, coffee and other small amenities for your comfort

#### ROOM TYPES

Studio style apartment with all the comforts of home

#### CONTACT

Telephone: 61 2 4037 1111  
 Email: [bookings@hunterstudios.com.au](mailto:bookings@hunterstudios.com.au)  
 Website: [hunterstudios.com.au](http://hunterstudios.com.au)



maitland

### 373 High Street Maitland NSW 2323

#### OVERVIEW

Punthill Maitland offers 76 serviced apartments, perfect for a short stay or a longer visit. Centrally located with road links to the Hunter Valley and Newcastle, we offer the perfect home-base for exploring the wider region whilst also being walking distance to restaurants and shops

#### HOTEL FEATURES

- A range of studio, one and two bedroom apartments
- Fully equipped kitchens in every apartment
- 24/7 on-site gym
- On-site free laundry facilities
- Free Wi-Fi

#### IMPORTANT INFORMATION

- Reception open daily 8am-8pm
- 24/7 afterhours support available.
- On-site parking (available at additional cost)

#### PRODUCT INFORMATION

- New hotel – opened in August 2024
- Conveniently located close to restaurants, shopping and galleries
- Luggage storage available
- Concierge service
- Tour recommendations upon request

#### WHAT TO BRING

- ID required for check-in
- Comfortable shoes for exploring Maitland's High Street - home to historic architecture, shopping, restaurants, cafés, and renowned Maitland Regional Art Gallery

#### ROOM TYPES

- Maximum group size is 40 rooms / 80 guests
- Each room can be prepared with 1 king bed or 2 single beds
- All group enquiries are subject to availability

#### CONTACT

Telephone: 61 2 4040 3400

Email: [maitland@punthill.com.au](mailto:maitland@punthill.com.au)

Website: [punthillmaitland.com.au](http://punthillmaitland.com.au)

### 11 Denton Park Drive Rutherford NSW 2320

#### OVERVIEW

Hunter Gateway Motel is your ideal retreat in the heart of the Hunter Valley, offering the perfect base to explore world-renowned wineries, vineyards, historic attractions, and the natural beauty of the region. Whether you're there for a romantic getaway, a business trip, or a family holiday, their warm and personable service ensures your stay is both relaxing and memorable. At Hunter Gateway Motel, they combine comfort, convenience, and friendly hospitality to deliver a truly enjoyable Hunter Valley escape

#### PROPERTY FEATURES

Conveniently located in Rutherford—just 5 minutes from Maitland, 25 minutes to the Hunter Valley Wine Region, 40 minutes from Newcastle, our central position makes it easy to enjoy everything the Hunter has to offer, from wine tours to beaches. Hunter Gateway Motel offers 63 fully refurbished, ground-level rooms - a modern, comfortable haven for every traveller

#### HOTEL INFORMATION

- Reception open daily: 9am-7pm on weekdays; 9am-6pm Saturday; and 10am - 4pm Sunday
- Free parking and guest laundry
- Ground level rooms with accessible paths and rooms
- Conveniently located near fast food and restaurants
- Key card locks
- Guest pool available

#### WHAT TO BRING

Just a hairbrush and toothbrush! Each room is equipped with air-conditioning, flat-screen smart TV, complimentary Wi-Fi, tea and coffee facilities, microwave, fridge, ironing facilities, blackout curtains, and housekeeping on request. Guests also enjoy free bottled water and wine glasses

#### ROOM TYPES

- Deluxe Twin, Queen and King rooms
- Premium King Spa room
- Family room
- Pet friendly rooms upon request

#### CONTACT

Telephone: 61 2 4937 7999

Email: [info@hunter-gateway.com.au](mailto:info@hunter-gateway.com.au)

Website: [hunter-gateway.com.au](http://hunter-gateway.com.au)



100 George Street East Maitland NSW 2323

**OVERVIEW**

Modern East Maitland apartments with stylish studios, king or twin beds, fully equipped kitchens, air conditioning, free Wi-Fi, laundry, Chromecast TVs, and secure parking. Perfect for exploring Hunter Valley and nearby attractions

**HOTEL FEATURES**

Studio, One Bedroom or Two Bedroom Apartments featuring well-equipped kitchens, air conditioning, free unlimited Wi-Fi, Chromecast streaming, a complimentary laundry room, and free secure parking

**WHAT TO BRING**

All the essentials are provided including towels, linen, cookware, dishes, coffee and other small amenities for your comfort

**IMPORTANT INFORMATION**

- Easily accessible with lift access to all floors
- No stairs required
- Bookings essential - no walk-ins
- Secure access via keypad and pincode

**ROOM TYPES**

Studio, one and two bedroom style apartment with all the comforts of home

**EXTRAS**

- 4-Star rating
- Free, unlimited wifi
- Cooking facilities
- Free laundry

**CONTACT**

Telephone: 61 2 4062 7080  
Email: [bookings@charlestownapartments.com.au](mailto:bookings@charlestownapartments.com.au)  
Website: [eastmaitlandapartments.com.au](http://eastmaitlandapartments.com.au)





# lake macquarie



With the largest saltwater lake in the southern hemisphere and pristine coastal beaches, Lake Macquarie is an aquatic playground with more than 30kms of coastline and 174kms of lake shore. Explore by boat, kayak or paddleboard. Hike through rainforests, cycle along coastal wetlands and explore magnificent ancient sea caves.

There is an abundance of art and culture at the Lake Macquarie Lake Arts Precinct, connected by a shared pathway around the lake shoreline. Take a tour of the Museum of Art and Culture, yapang and outdoor sculpture park or a stroll along the Creative Lake Sculpture Trail whilst enjoying the scenery of the vast saltwater lake.

Lake Macquarie has everything from craft breweries, hidden coffee shops and waterfront fine dining, to ice cream and fish 'n' chips by the foreshore.



Distance from Newcastle: 28kms, 20 minute drive

Distance from Sydney: 145km, 1.5 hours drive



## Nature & Wildlife

- Lake and island cruise with guided nature walk
- Foreshore walks and bike rides
- Lake Macquarie Conservation Area - bushwalking and observing wildlife
- Belmont Wetlands and Fernleigh Awabakal Shared Track
- State Park and the Yuelarbah Walking Track



## Aquatic & Coastal

- Australia's largest coastal saltwater lake
- Private boat tours
- Kayaking, paddleboarding, boat and sailing tours
- Iconic sea caves
- Skydiving, stunt plane and helicopter tours over the lake



## Heritage & Culture

- Lake Macquarie Lake Arts Precinct - Museum of Art and Culture, yapang, Multi-Arts Pavilion, mima, MAC yapang Sculpture Park, Creative Lake Sculpture Trail
- Heritage and maritime history - Readhead Shark Tower, Catherine Hill Bay and Rathmines Heritage Centre
- Aboriginal interpretation and public art at the Fernleigh Awabakal Shared Track



**Departs from Lake Macquarie Yacht Club 4 Ada Street Belmont NSW 2280**

**OVERVIEW**

Silver Sun Sailing is Lake Macquarie's premier, award-winning yacht charter enterprise. Move through nature powered by the wind on a sustainable, immersive nature escape. Or experience the tranquility of over-water accommodation. Also offering Australia's only fully-catered overnight, onboard luxury escape experience

**ENTRY, PASS OR TOUR INCLUSIONS**

**Sail:** Two-hour sail on a 40ft French yacht, led by experienced skipper and crew. Grazing board; bubbles, beer, wine, soft drink (of your choice); unlimited juice, tea, coffee and water

**Stay:** On-board accommodation on a fully equipped 40' French Beneteau yacht. Three queen size cabins. Stay in Lake Macquarie Yacht Club marina or moored on beautiful Lake Macquarie

**CRUISE TYPES**

- Watch the Lake Wake Cruise: 8.30am – 10.30am
- Sunset Cruise: 4.30pm – 6.30pm (times may vary according to sunset time)
- Romantic Indulgence: departs 3pm, 2-hour sail, secluded mooring on Lake Macquarie, three course meal prepared for you, overnight stay, breakfast, return sail to marina. (no crew on board overnight)

**WHAT TO BRING**

- Hat, white soled shoes, sunscreen
- Weather-appropriate clothing

**PRODUCT INFORMATION**

- 40' French Beneteau yacht
- Smooth water experience
- Tours of nature-rich Lake Macquarie
- View Aboriginal landmarks
- Bespoke experiences by appointment

**GROUP CAPACITY**

- 8 guests

**CONTACT**

Telephone: 61 409 496 527  
 Email: [info@silversunsailing.com.au](mailto:info@silversunsailing.com.au)  
 Website: [silversunsailing.com.au](http://silversunsailing.com.au)



**5 Mitchell Street Belmont NSW 2280 | Take-off Belmont Airport | Land near Belmont Golf Course**

**OVERVIEW**

Experience Australia's ultimate coastal skydive at Newcastle. Jump from up to 15,000ft with unmatched views over pristine beaches, Lake Macquarie and the Hunter coastline — the perfect adrenaline experience just minutes from the shoreline

**ENTRY, PASS OR TOUR INCLUSIONS**

- Tandem skydive up to 15,000ft with 60 seconds of freefall
- Professional skydive instructors and guidance
- All equipment provided
- Use code HUNTER10 for an exclusive 10% discount

**IMPORTANT INFORMATION**

- All participants must meet age and weight requirements
- Allow up to 3 hours for your skydive experience
- Transfers are available
- Photo and video packages available to purchase

**WHAT TO BRING**

- Comfortable clothing and enclosed shoes
- Identification
- Dress appropriately for the weather

**GROUP CAPACITY**

Suitable for individuals, couples, families, and small groups

**CONTACT**

Telephone: 1300 663 634  
 Email: [info@skydive.com.au](mailto:info@skydive.com.au)  
 Website: [skydive.com.au](http://skydive.com.au)

# COASTXP



**Chalmers Street Jetty, Swansea NSW 2281**

### OVERVIEW

CoastXP's Lake Macquarie tours travel along the stunning coastline of Lake Macquarie, as well as around the lake itself. Led by experienced wildlife guides aboard a custom-built boat. Tours offer the option to be paired with a dining experience

### ENTRY, PASS OR TOUR INCLUSIONS

- Tours explore geological formations, maritime history, local marine life and Aboriginal Heritage
- Professional and knowledgeable guide
- Personable service
- Bottled drinking water
- Modern vessel and equipment
- Premium weatherproof jackets

### IMPORTANT INFORMATION

- Tours depart on weekends and during school holidays
- Private charters are available 7 days per week

### WHAT TO BRING

- Warm, weather-appropriate clothing
- Enclosed shoes
- Hat and sunglasses

### PRODUCT INFORMATION

Guests are likely to observe dolphins, seals and whales in season (May to November)

### GROUP CAPACITY

- Atmos vessel seats 20 guests
- Hydro vessel seats 12 guests
- Public and private tours available

### CONTACT

Telephone: 1300 852 682

Email: [hello@coastxp.com](mailto:hello@coastxp.com)

Website: [coastxp.com](http://coastxp.com)



**458 Lake Road Argenton NSW 2284**

### OVERVIEW

Located at the northern tip of Lake Macquarie and just minutes away from shopping, leisure and sporting precincts, Macquarie 4 Star is the ideal hub for your next business, social or sporting getaway

### HOTEL FEATURES

- Direct or online booking service
- Personalised service & customised group packages
- Free WIFI and Foxtel
- Daily room service
- Complimentary amenities
- Buffet Breakfast and meal add-ons available
- Visitor information including maps, brochures

### ADDITIONAL FACILITIES

- Reception open 8am – 8pm
- After hours check in available
- Complimentary onsite parking with bus friendly parking options
- Secured covered access to Club Macquarie offering meals, beverage and entertainment
- Interconnecting and accessible rooms with lift and wheelchair access

### WHAT TO BRING

- Photo ID required at check in
- Valid credit card for pre-authorisation

### CAPACITY

Macquarie 4 Star features 36 rooms with total capacity of 136 persons sharing existing bedding.

Experience modern comfort in premium accommodation. Featuring luxury bedding, private bathroom and contemporary comforts

### CONTACT

Telephone: 61 2 4911 9595

Email: [macquarie4star@clubmacquarie.com.au](mailto:macquarie4star@clubmacquarie.com.au)

Website: [macquarie4star.com.au](http://macquarie4star.com.au)



## Apollo International

lake macquarie



290 Pacific Highway Charlestown NSW 2290

### OVERVIEW

The Best Western Plus Apollo International Hotel offers 4.5-star accommodation in the heart of Newcastle's southern gateway. Nestled among tranquil bushland moments from Charlestown's retail and dining precinct, the hotel combines peaceful surroundings with the convenience of a central location

### HOTEL FEATURES

Our 95 spacious and contemporary rooms are designed for comfort and relaxation, many featuring private balconies with leafy outlooks. Each room includes complimentary Wi-Fi, smart TVs, minibars, and luxury bedding — ideal for both corporate travellers and leisure guests

### ADDITIONAL FACILITIES

- Onsite restaurant and bar
- Swimming pool & gymnasium
- Conference & event spaces
- Complimentary on-site parking
- Accessible rooms & facilities are also available for guests with mobility needs

### EXTRAS

With its combination of quality, comfort, and convenience, the Apollo International is the perfect choice for business travellers, holidaymakers, and locals seeking a refined stay or memorable dining experience

### WHAT TO BRING

Photo ID and a valid credit card

### ROOM TYPES

- 48 deluxe rooms - queen beds
- 25 superior rooms - king beds
- 13 executive rooms - king beds
- 3 spa rooms - king beds
- 4 family rooms - 1 king bed & 2 singles
- 1 hunter suite (premium) - king bed
- 1 apartment (fully self contained) - 1 queen bed & 2 single beds

### CONTACT

Telephone: 61 2 4943 6733

Email: [stay@apollointernational.com.au](mailto:stay@apollointernational.com.au)

Website: [apollohotelnewcastle.com.au](http://apollohotelnewcastle.com.au)

## MERCURE

HOTEL

CHARLESTOWN



109 Madison Drive Charlestown NSW 2290

### OVERVIEW

Escape to Mercure Charlestown — a tranquil 4-star retreat nestled in bushland, minutes from Newcastle CBD. The perfect base to explore Newcastle, Lake Macquarie and the Hunter Valley. Return each evening to relax and unwind

### HOTEL FEATURES

Take a dip in the outdoor pool, unwind in the spa, and savour Modern Australian cuisine at Madison Kitchen + Bar. Enjoy free parking, free Wi-Fi, and easy access to everything Newcastle and the Hunter has to offer

### IMPORTANT INFORMATION

- Property is two-level with no lift — luggage assistance gladly available
- Pool and spa are unheated
- Buffet Breakfast, and Dinner available 7 days
- Pets not permitted
- A 1.4% credit card surcharge applies

### EXTRAS

- 4-star rating
- Free parking
- Free Wi-Fi
- Foxtel
- Minibar
- Balcony & bath (select rooms)



### WHAT TO BRING

Just pack your swimsuit and a sense of adventure! Don't forget photo ID and a physical card for check-in. Light layers are perfect for our fresh coastal air — we'll take care of the rest

### ROOM TYPES

- Standard Queen
- Superior Twin
- Family
- Executive Kin
- Privilege King & Spa

### CONTACT

Telephone: 61 2 4943 8899

Email: [desk@mercurecharlestown.com.au](mailto:desk@mercurecharlestown.com.au)

Website: [mercurecharlestown.com.au](http://mercurecharlestown.com.au)





Upper Hunter Country spans Muswellbrook and Upper Hunter Shires and offers one of the closest real country experiences to Sydney.

Internationally renowned as the heart of Australia's thoroughbred breeding industry, the region also boasts breathtaking landscapes—from rolling grasslands and dramatic escarpments to subtropical forests and alpine bushland.

Visitors can enjoy stud farm tours, scenic drives, heritage villages, boutique wineries and outdoor adventures. With new commissionable tourism experiences emerging, the region is expanding its appeal to international trade and multi-day itineraries, offering authentic, high-quality country encounters for all who seek real, immersive rural experiences and events.



Distance from Newcastle: 115kms, 1.5 hrs drive  
Distance from Sydney: 250kms, 3 hours drive



## ✦ Unique Experiences

- Horse capital of Australia – world-renowned thoroughbred horse studs and nurseries
- Authentic, year-round country events celebrating rural life
- Flavours of the Upper Hunter – estate grown wines paired with paddock-to-plate produce



## Nature & Wildlife

- Water recreation at Lake Glenbawn
- Lakeside and bush camping with misty mornings and starry nights
- Wildlife encounters and bird-watching
- Expansive National Parks, scenic nature hikes & bush trails



## Heritage & Culture


- Regional galleries & heritage museums
- Self-drive scenic routes through heritage towns, vineyards and lookouts
- Historic walks & townships – explore colonial architecture, railway heritage, pubs and pastoral history
- Indigenous experiences – stories of Country and sacred landscapes



Dungog Shire sits at the gateway to the Barrington Tops and broader Hunter Region. Defined by rugged mountains, forested valleys and charming river villages, the area offers an authentic country experience within just 2.5 hours' drive of Sydney.

Dungog is increasingly recognised for its outdoor adventure and road-trip appeal, with growing interest in mountain biking, hiking, nature immersion and scenic self-drive itineraries that connect seamlessly with the broader Hunter Region. These experiences are complemented by heritage streetscapes, local produce and a genuine village atmosphere that resonates strongly with international visitors seeking something off the beaten path.

A number of new commissionable tourism products are coming online in Dungog, expanding opportunities for trade partners to package the destination into multi-day itineraries focused on adventure, nature and authentic regional experiences.

 Distance from Newcastle: 55kms, 1 hour drive  
Distance from Sydney: 200kms, 2.5 hours drive



## Nature & Wildlife

- Mountain biking
- Bush walking
- Eco retreats and riverside camping
- Boating and swimming
- National Parks and State Forests
- Farm gates
- Roadside produce stalls



## Heritage & Culture

- World Championship Qualifier Pump Track
- Charming heritage shops
- Picturesque river villages
- Scenic country drives
- Authentic rural cafe and pubs
- Explore ranges on horseback
- Unique annual events to entice





For more information  
contact the team at Destination Sydney Surrounds North  
[admin@dssn.com.au](mailto:admin@dssn.com.au)  
[www.dssn.com.au](http://www.dssn.com.au)

**hunter** REGION  
NEW SOUTH WALES - AUSTRALIA

